



# Bartletter

FEBRUARY/MARCH 2013

progress with pride

## Come to the Police Open House & Lions Club Pancake Breakfast

The Bartlett Police Department is hosting its free, annual Open House event on Sunday, March 24 from 9 a.m. to 1 p.m. This fun-filled family event is being held in conjunction with the Bartlett Lions Club Pancake Breakfast at the Bartlett Fire Barn, 218 S. Main Street.

The Bartlett Lions Club will be flipping pancakes from 8 a.m. to 1 p.m. Tickets are \$5 for adults, \$3 for kids and free for those younger than 5 years old. Tickets are available from any Lions Club member or at the door.

The Police Open House is a great opportunity for residents to interact with members of the Bartlett Police Department, tour the police station, sit inside the new police cars, and enjoy a wide selection of different police displays and demonstrations.

For more information, please contact Sergeant Geoffrey Pretkelis or Sergeant Michael Rummell at 630-837-0846.



The Bartlett Police Department highly encourages Bartlett residents and businesses to register for the new Smart911 technology service recently implemented by its 9-1-1 emergency call center, DuComm.

Residents and businesses can register their home, business, and cellular telephone numbers for free at [www.Smart911.com](http://www.Smart911.com). The service allows you to provide emergency personnel with valuable, additional medical information, pet information, special needs information, specific information about your residence or business, language preferences, and photographs of yourselves or your children when a 9-1-1 call is placed. Smart911 also allows the dispatchers to track the location of a cellular telephone call through global positioning technology in case the call is dropped or if an individual uses a cellular telephone instead of a landline telephone at a business or at a residence.

The information provided to Smart911 is encrypted and secure and will never be sold or used for any purposes other than public safety. Only the Bartlett Police Department and Bartlett Fire Protection District will be able to access the information once the dispatchers relay it to the emergency personnel in the field.

### *Inside this Issue*

- Electricity Aggregation Update.....2
- Timeout with the Trustees.....3
- Flood Protection Information.....4 & 5
- Zoned for Business, Did You Know..... 6
- Community Calendar .....7 & 8
- Coming Events at Bartlett Hills & Museum.....9
- From the Archives & Museum News.....10
- Bartlett Briefs.....11
- Community Parks Cleanup.....12



## Electricity Aggregation Q&A

Due to recent legislation, Illinois residents can save money on their electric bill by using a third-party energy supplier; municipalities also can seek lower electricity costs for their residents and small businesses through aggregation.

### What are the steps for electrical aggregation?

The first step is to put the question before voters. Although Bartlett residents voted down such a referendum in March 2012, board members have been asked by citizens to revisit the issue. In November, the trustees voted to place the electrical aggregation question on the April ballot.

If the referendum passes, the Village will take the next step and go through a public bidding or proposal process to select an electricity supplier for all of Bartlett. This is the best way to achieve maximum rate savings.

### Can I opt-out of the program?

If the referendum passes, almost all Village residents and small businesses would be included automatically in the aggregation unless you specifically choose not to be.

You would receive a notice allowing you to opt-out of the program. In addition, if you have already signed up for a third-party electricity provider on your own, you will not be included in the Village program. You may, however, opt-out of your selected program and join the Village, but there may be an early termination fee attached to your third-party agreement.

### How does ComEd fit into the picture?

Regardless of which company is producing the electricity, ComEd remains as the distributor. All residents continue to receive a monthly bill from ComEd. The only difference will be the name in the "power supplier" line of the bill and hopefully a reduced "amount due" line. ComEd will also continue handling complaints and outage calls.

### When would aggregation take effect?

Because the process for municipal aggregation requires a referendum to be passed and a public bid or proposal process, those included in the program should not expect to see savings in their electric bill until late summer or fall of 2013.

### If the referendum passes, does the village receive any money from aggregation?

Some municipalities have incorporated a "civic contribution" in their electricity aggregation program. The Village of Bartlett will not receive any

money from creating an electricity aggregation program for residents and eligible small businesses.

### What if the referendum does not pass?

If voters do not approve the referendum question, ComEd will continue to be your provider for electric supply, unless you independently choose an alternate energy supplier.

### Are there other choices?

Residents can choose a third-party supplier on their own. The Illinois Commerce Commission, the agency responsible for registering third-party electricity suppliers in Illinois, created the website [www.pluginillinois.org](http://www.pluginillinois.org). The website provides additional information on residential electricity aggregation, including rates currently being offered by a number of third-party suppliers in Illinois.

Another option for residents and small businesses is to sign up for the Clean Air Counts Energy Savings program. Bartlett residents are eligible for this program because the Village is a member of the Metropolitan Mayors Caucus Clean Air Counts Program, an initiative to improve air quality in the Chicago metropolitan area.

Clean Air Counts has already secured electricity pricing with Integrys Energy that is currently 31.5% cheaper than ComEd's electricity supply rate. This 31.5% savings on the electric supply rate runs through the June 2013 meter read. For more information about the Clean Air Counts program or to sign up, please visit [www.cleanaircounts.org](http://www.cleanaircounts.org) and click on the Energy Savings Program with Energy Choices icon.

Residents interested in choosing a third-party electricity provider should read all of the terms and conditions and be aware that many program agreements, including the Clean Air Counts agreement, have an early termination fee. Please note that current program savings are in comparison to ComEd's current electricity supply rates. ComEd's new rates, which will go into effect in June 2013, are not yet known.

### Public Presentations on Aggregation:

Tuesday, 2/12 - 1 p.m. @Village Hall  
 Saturday, 2/16 - 9 a.m. @Coffee with the Board  
 Tuesday, 2/19 - 7 p.m. @Board Committee Mtg  
 Saturday, 3/16 - 9 a.m. @Coffee with the Board  
 Thursday, 3/21 - 7 p.m. @Village Hall



## Timeout with the Trustees



The Bartlett Veterans Memorial Foundation recently presented a plaque to the Village in appreciation for Bartlett's support of the Veterans Memorial.

During the presentation, John Seger from the Memorial Foundation talked about how the local VFW and American Legion initiated the memorial discussion, about the input, ideas and direction they received from Village staff and how the Village "was



this Village is." The bayonet on the plaque is one of three cast for the Bartlett Veterans Memorial statue.

As Mayor Airdo said when this plaque was presented to the Village, it is a great honor and privilege to be given such a gift. The appreciation, however, is all ours.

We are thankful to all the volunteers in the Bartlett Veterans Memorial Foundation for choosing to undertake such an important, yet daunting project. They

started the memorial with the decision that it should be design and not budget driven. They began fundraising in earnest with no thought of looking back, determined to build a lasting tribute worthy of our veterans as well as all of those who are still serving our country in the Armed Forces.

We are thankful to our veterans. Since World War I, Bartlett has been sending its sons and daughters to serve our country. And though we

may want to forget the wars that have cost our families, our community dearly, we could never forget the brave men and women who fought and continue to fight those wars. We are pleased that the Bartlett Veterans Memorial will stand in our Village as our community's way of saying that we are truly and forever thankful to our veterans.

However, as John Seger reminded us, the Veterans Memorial is not yet finished. Phase I was dedicated in May of 2012, but there is still more work to be done. Please visit the memorial site at the corner of Stearns and S. Bartlett Roads and then, to see how you can help with this effort, go to the foundation's website [bartlettveteransmemorial.com](http://bartlettveteransmemorial.com).

Although Bartlett's Veterans Memorial has already become a place of reflection and honor for our community, when it is complete, it will truly bring pride to the Village of Bartlett and show "how great this Village is."



gracious enough to acquire the land where our Veterans Memorial sits today."

Seger read the inscription on the plaque, which in part says, "Presented to the Village of Bartlett in grateful appreciation for your support in making the Bartlett Veterans Memorial a reality..." He added that the plaque should be displayed "for visitors and anybody who ever comes and wonders how great



*The Bartletter is printed on recycled paper using soy ink.*

# Flood

## FLOOD HAZARD AREAS

The Village of Bartlett has some floodplain areas. On the northwest side of town is the Brewster Creek Tributary. In the middle of town there is some floodplain in the Wayne Grove Forest Preserve. The northeastern part of the Village has the Brewster Creek floodplain, which flows to the West Branch of the DuPage River floodplain.

Information on whether your property is in the 100-year floodplain can be obtained by coming into the Village of Bartlett Building Department. Maps are available for viewing, as well as other flood-related information. Contact the Village of Bartlett Building Department, 630-837-0800 for further assistance.

## NATURAL & BENEFICIAL FUNCTIONS

Floodplains play a valuable role in providing natural benefits to the Village of Bartlett and the surrounding area. Floodplains that are relatively undisturbed provide open spaces and aesthetic pleasure, as well as function for active processes, such as filtering nutrients.

Wayne Grove Forest Preserve and Hawk Hollow Forest Preserve floodplains are used to filter farm chemical runoff so that these areas can maintain biodiversity and ecosystem sustainability. Both floodplains contain historic and archeological sites that provide opportunity for education. Both enhance waterfowl, fish and other wildlife habitats and provide feeding/breeding grounds. And lastly, both floodplains provide natural erosion control and open space so further flooding damage does not occur.

## FLASH FLOODS

Flash-flooding is the general type of flooding caused by heavy rain events. A flooding event can occur with 2 to 4 inches of rain in a 3 to 4 hour time period on some streets throughout the Village. Several detention areas may rise during these events. However, all of the Village streets are designed to additionally store stormwater for a period of time.

The Village experienced a record rain event in September of 2008; almost 9 inches of rain occurred in less than a 24-hour period. The Village has made several drainage improvements since then and is continually making improvements in the community.

## DRAINAGE SYSTEM MAINTENANCE

As simple as it may sound, keeping smaller ditches and streams free of debris can dramatically improve the run-off capacity of low-lying areas and can greatly reduce the occurrence of blockage that significantly contributes to flooding.

It is illegal to dump materials into a required waterway and violators may be fined. If you see someone in the act of dumping or see debris in one of Bartlett's watercourses, please contact the Village Public Works Department at 630-837-0811.

Homeowners are responsible for maintaining their perimeter drainage swales. If you have any flooding or drainage concerns on your property, the Village of Bartlett staff is available to assess your drainage concerns. You can contact the Building Department at 630-837-0800.

## PROPERTY PROTECTION MEASURES

If your property is susceptible to flooding, there are many flood damage reduction measures you can employ.

- Watertight seals can be applied to brick and block walls to protect against low-level flooding.
- Utilities, such as heating and air conditioning systems, water heaters and other major appliances can be elevated to higher floors in the structure or onto raised platforms.
- Temporary measures, such as moving furniture and other valuables to higher floors or sand-bagging exterior openings, will also help.
- Elevating or relocating the entire structure may also be a feasible option.

## FLOODPLAIN PERMIT REQUIREMENTS

All development within the 100-year floodplain (not just construction of buildings, but filling, excavation, fences, etc.) requires a Village Development Permit. Applications must be made prior to doing any work in a floodplain area.

Please contact the Village Building Department, 630-837-0800, to receive all the information you need to properly develop in the floodplain. You may report any illegal development activities to the above number as well.

## FLOOD INSURANCE

If you do not have flood insurance, talk to your insurance agent. Most homeowner insurance policies do not cover damage from floods. Flood insurance is only available to communities participating in the National Flood Insurance

# Protection

Program (NFIP). Because of Bartlett's floodplain management programs, which attempt to protect property owners from multiple flooding hazards, the Village is part of the NFIP. Bartlett residents are able to obtain flood insurance. Additionally, because the Village participates in FEMA's CRS program, flood insurance premiums are discounted.

Be sure to check your policy to ensure you have adequate coverage. Typical policies cover the building structure, but not the contents. Contents coverage can also be obtained by asking.

There is a 30-day waiting period before flood insurance coverage becomes effective. Plan ahead; do not wait until a flood is predicted before purchasing flood insurance. If you are building inside the floodplain and are using a federally regulated lender/bank for a loan, the purchase of flood insurance is mandatory.

## **SUBSTANTIAL IMPROVEMENT/DAMAGE**

If the cost of improvements to a building or the cost to repair damages (from any cause) to a building exceeds 50% of the market value of the building (excluding land value), the NFIP requires that the entire building be brought up to current floodplain management standards. Building improvement projects include exterior and interior remodeling, rehabilitation, additions and repair and reconstruction projects. Please contact the Village of Bartlett Building Department at 630-837-0800 for further information.

## **FLOOD WARNING SYSTEM**

Many times, flooding of streets and parking lots in Bartlett can be predicted, allowing ample time for preparation and evacuation. However, in the event of a flash flood due to a large rain event, there may only be hours to execute a plan.

Once the Bartlett Police and Bartlett Fire Protection District are notified of an oncoming flood event, the Village's Emergency Alert System will be activated. The Village can send a Code Red or mass emergency notification

system alert to the entire Village or a specific neighborhood. Community alerts and additional safety information will also be posted to the Village website and cable television station.

## **ADDITIONAL INFORMATION**

Here are some additional resources for flood-related issues in the Village of Bartlett:

- *FEMA.gov* website
- Village Hall, 630-837-0800
- Floodplain FAQ page on the Village website  
*www.village.bartlett.il.us*
- Bartlett Public Library

## FLOOD SAFETY

The following commonsense guidelines can protect you from the dangers of flooding:

- Do not drive through a flooded area. More people drown in cars than anywhere else. Do not drive around barriers.
- Do not walk through flowing water. Currents can be deceptive. Six inches of water can knock you off your feet.
- Stay away from power lines and electrical wires. If your house is about to be flooded, turn off the power at the service box. Electrical current can travel through water. Electrocutation is the second leading cause of death during floods.
- Be alert to gas leaks. Turn off the gas to your house before it floods. If you smell gas, report it to the Fire Protection District, the Village or your gas company. Do not use candles, lanterns or open flames if you smell gas or are unsure if your gas has been shut off.
- Keep children away from flood waters, ditches, culverts and storm drains. Flood waters can carry unimaginable items that have dislodged themselves. Culverts can suck in smaller people, rendering them helpless.
- Clean everything that has been wet. Flood water is contaminated with sewage and other chemicals, which pose severe health threats.
- Look out for animals, especially snakes. Small animals that have been flooded out of their home may seek shelter in yours.
- Do not use gas engines, such as generators, or charcoal fires indoors during power outages. Carbon monoxide exhaust can pose serious health hazards.



## ZONED FOR BUSINESS

**S & A Chiropractic** is open at 372 S. Main Street, next to V & V Paesano Pizzeria. Dr. Alex Ayzenshteyn D.C. and Dr. Josh Stevens



D.C. bring years of experience to this new business and are committed to delivering the best possible health care to every patient that

walks into their office. Both have doctorates of chiropractic from Palmer College of Chiropractic in Iowa.

Hours are from 9 a.m. to 6 p.m. Monday through Friday and Saturday by appointment. Call 630-823-7034 or visit [www.sa-chiropractic.com](http://www.sa-chiropractic.com) for more information.

**JDN Heating and Air Conditioning Systems Inc.** has been a home-based business for more than 20 years and now has a commercial storefront at 314 S. Main Street. The Misicka family provides the area with top quality service and installation of residential and commercial



heating and cooling systems. JDN is an independent certified Trane heating and air conditioning dealer and carries top of the line products to fit your heating and cooling needs. Contact JDN at 630-213-6736 or [www.jdnsystems.com](http://www.jdnsystems.com).

Area resident James M. Yonkee O.D. has opened **Total Vision Family Eye Care** at 1691 S. Route 59 in the Shops at Far Hills shopping plaza (near Starbucks). Yonkee has a doctorate in optometry from the Illinois College of Optometry and more than 18 years of experience fitting contact lenses and bifocal systems tailored to the individual lifestyle of each patient, co-managing laser vision surgery, and diagnosing and managing eye disease.



Total Vision's hours are Monday from 9 a.m. to 7 p.m., Tuesday through Thursday from 9 a.m. to 5 p.m., and Saturday from 9 a.m. to 1 p.m. The office is closed on Friday and Sunday. Contact Total Vision at 630-372-2883 or learn more at [www.mytotalvision.com](http://www.mytotalvision.com) or on Facebook.

Go to the Discover Bartlett page on Facebook to keep up with business-related photos and events throughout the Village.

### Did You Know?

...that planning for the 2013 Resurfacing Project is underway. The Village will be resurfacing approximately 30 street miles this year. The project will emphasize pavement replacement, and very limited curb and gutter work will be done. Patching and resurfacing will take place throughout Bartlett, beginning in April or May, extending through October.

Please feel free to contact Public Works at 630-837-0811 for updates as further information becomes available over the next several months. As always, check the Bartlett website and The Bartletter for project information and important dates.



# February 2013

SUN	MON	TUES	WED	THURS	FRI	SAT
<p><b>“Stand with anybody that stands right, stand with him while he is right and part with him when he goes wrong.”</b>                      ~Abraham Lincoln, 16th President of the United States</p> <p><b>Character Counts! in Bartlett</b></p>					1	2
					<p>Kids' Craft @ Depot Museum, 9am to noon</p> <p>Craft &amp; Vendor Show @ Bartlett Hills 10am to 4pm</p>	
3	4	5	6	7	8	9
	Valentine Card Making Day 10am to 4pm at Village Hall	Village Bd Mtg 7 pm		ZBA Mtg 7:30 pm		
10	11	12	13	14	15	16
	EDC Mtg 7:30 pm	Aggregation Presentation, Village Hall @ 1 pm		Plan Comm 7:30 pm		Coffee w/Bd & Aggregation Info, 9 am Village Hall  Mardi Gras @ the Nature Center, 6pm
17	18	19	20	21	22	23
	<b>PRESIDENTS' DAY</b>	Art Reception @ Village Hall Gallery, 5:30 to 6:45 pm  Village Bd Mtg 7 pm & Aggregation			Relay for Life Kickoff 6:30 pm, at H. Twnshp  Pk Dst Bags Tournament 7 to 11 pm	Prescription Drug Dropoff @Village Hall 9 am to noon
24	25	26	27	28		
				Juliette Gordon Low Event, 7pm at Village Hall		

**Comcast channel 17/AT&T channel 99**

**7**

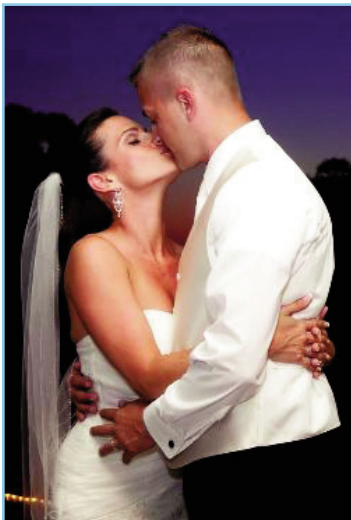
# March 2013

SUN	MON	TUES	WED	THURS	FRI	SAT
<p><b>“The way to overcome the angry man is with gentleness, the evil man with goodness, the miser with generosity and the liar with truth.”</b> ~ Indian proverb</p> <p><b>Character Counts! in Bartlett</b></p>					1	2 Kids' Craft @ Depot Museum, 9 am to noon
3 Bridal Showcase @ Bartlett Hills noon to 3pm	4	5 Village Bd Mtg 7 pm	6	7 ZBA Mtg 7:30 pm	8	9 March 7 to March 10 Rockin' Tale of Snow White at Park District 7 pm & 1 pm shows
10 <b>DAYLIGHT SAVING TIME BEGINS</b>	11 EDC Mtg 7:30 pm	12	13	14 Chgo Flower & Garden Show Trip leaving Pk Dist at 9 am  Plan Comm 7:30 pm	15	16 Coffee w/Bd & Aggregation Info, 9 am Village Hall  Bartlett Idol Competition, 10am/1:30pm
17	18	19 Art Reception @ Village Hall Gallery, 5:30 to 6:45 pm  Village Bd Mtg 7 pm	20 <b>SPRING BEGINS</b>	21 Aggregation Presentation, Village Hall @ 7 pm	22	23 Bunny Lunch @ Comm Ctr noon
24 Lions Breakfast & Police Open House, see pg 1  Pk Dst Wine Tasting Trip 1:30pm	25	26	27	28 Aqua Egg Hunt @Splash Central 10am	29	30 Prescription Drug Dropoff @Village Hall 9 am to noon
31						



# Out and About

at Bartlett Hills Golf Club



## Craft & Vendor Show

Saturday, 2/2 from 10 a.m. to 4 p.m.

Mark your calendar because Bartlett Hills Golf Club is hosting many new crafters and vendors this year. Admission is \$2 or free with donated canned goods for Hanover Township's Food Pantry. There will also be Raffles! Raffles! and more Raffles! to benefit the Susan G. Komen Foundation. For more information, please call 630-213-3103, e-mail [mgearhart@vbartlett.org](mailto:mgearhart@vbartlett.org) or visit [www.bartletthills.com](http://www.bartletthills.com).

## Bartlett Hills Bridal Showcase!

Sunday, 3/3 from noon to 3 p.m.

Meet with the area's top wedding professionals to help put the final touches on your big day! Tickets are \$10 in advance and \$15 at the door. Ticket price includes champagne, hors d'oeuvres, gift bag and two guests! There also will be fashion shows by Bella Bridal Boutique and

Mario Tricoci Salon! Call 630-213-3103 or email [evan@bartletthills.com](mailto:evan@bartletthills.com) to pre-register or for more information.

at the Bartlett History Museum in Village Hall

## My Pretty Valentine Card Creating Day

Monday, 2/4, 10 a.m. to 4 p.m.

The Bartlett History Museum invites children and their families to its annual valentine card making open house. Guests, of all ages, can drop by the museum between 10 a.m. and 4 p.m. to create beautiful valentines for the special people on their list. All the materials are provided and no registration is required for this free event. Vintage valentines from the museums' collection are on display and serve as inspiration. Call 630-837-0800 for additional information.



## Daisy's Girls, Camping with Juliette Gordon Low

Thursday, 2/28, at 7 p.m.

Everyone, especially current and former Girl Scouts and leaders, are invited to celebrate the centennial anniversary year of the Girl Scouts of America by attending "Daisy's Girls, Camping with Juliette Gordon Low," a portrayal adapted and performed by Betsey Means.



The doors will open at 6:30 p.m. and birthday cake will be served. Guests can also tour the museum's current exhibition, "Snip, Snaps and Sentiments, A Scrapbook of Bartlett's Scouting Heritage." All scouts, who attend in uniform, will be eligible to enter a drawing to win a Girl Scout scrapbook kit that evening. Early Bartlett scouts and leaders will be recognized for their participation and dedication in laying the foundation of scouting in our community.

In March 1912, Juliette Gordon Low organized Girl Scouting by stating, "I've got something for the girls of Savannah, and all of America, and all the world, and we're going to start it tonight!" To join in the museum's festive evening, please call 630-837-088 to reserve your seat(s), which is required due to space limitations.



## From the Archives

March means one thing to basketball enthusiasts, college playoffs! The spirit of March Madness also could be felt in Bartlett decades ago, when Bartlett High School had its own team.

The original Bartlett High, a two-year program, was located within Bartlett School. The students had their own classroom, activities and teacher, separate from the 1st through 8th elementary grades.

A February 8, 1927 article in the Cook County Herald proclaimed, "Bartlett School Large In Community Spirit." The article stated the high school "has only an enrollment of twenty but few schools have a greater school spirit. The boys have organized a basketball team and have played three games."

Bartlett School, then located at Hickory and North Avenues, did not have a gym to play or practice in. The boys took out memberships at the Elgin Y.M.C.A. for "gym work" with transportation to Elgin paid for by the Cook County Rural School System to which Bartlett belonged.

This wool basketball jersey, circa 1930, was worn by the players, hence the white felt letter B stitched on the front. The number four is sewn on the back. The late Fred Benicke (1914-2006), a longtime Bartlett resident, recalled wearing these jerseys when he played on the high school team. According to Benicke, they were donated by townsman George "Dolly" Gray.



## Sweet Sentiments

Since the 1700s, cards expressing love and caring have been sent on Valentine's Day. The Victorians turned these greetings into lavish love notes with the addition of flowers, lace, and winged cupids.

The Bartlett History Museum's collection of vintage valentines, dating from the early to mid-1900s, is on display until the end of February. The exhibition, entitled "Sweet Sentiments," is located in the council chamber hallway at Village Hall, 228 S. Main Street.

Cards on display feature a variety of styles of artwork and design with sweet sentiments to match!

## Depot Museum is Open!

The Depot Museum reopens on Saturday, 2/2, after its winter break. You can visit on Tuesday and Thursday from noon to 5 p.m. and the first Saturday of the month from 9 a.m. to noon. Admission and parking across the street in the Village lot are free.

This year the depot celebrates its 140th birthday. Watch for details about a birthday celebration!

Children and parents are invited to stop by on the first Saturday of the month for a free craft. No registration necessary but supplies are limited. **Saturday, 2/2** - Kids choice! Embellish and personalize a heart-shaped box or mailbox.

**Saturday, 3/2** - Celebrate the return of spring. Paint a birdhouse sun catcher wreath to hang in your window.

# BARTLETT BRIEFS

## SAVE THE DATE FOR THESE PARK DISTRICT EVENTS

### February 16 from 6 to 10 p.m.

Mardi Gras @ the Nature Center  
\$10 in advance or \$15 at door

### February 22 from 7 to 11 p.m.

Winter Classic Bags Tournament  
\$35/team age 21 & older by 2/15

### February 24, 1:30 to 5 p.m.

Wine Tasting Trip for Adults  
\$30 fee includes bus, wine tasting, light refreshments & tour  
Registration deadline is 2/18

### March 7 to March 10

Rockin' Tale of Snow White  
7 p.m. & 1 p.m. performances  
\$8 per ticket for all ages  
630-540-4834 for tickets

### March 14 from 9 a.m. to 3 p.m.

Chicago Flower & Garden Show  
\$19 fee for bus & admission  
Registration deadline is 2/11

### March 16 @10 a.m. & 1:30 p.m.

Bartlett Idol Singing Competition  
\$6 fee to compete by 3/1  
\$2 spectator tickets starting 3/1

### March 29 at 10 a.m.

Aqua Egg Hunt @ Splash Central  
\$8 resident/\$10 nonresidents for babies to age 8 & older by 3/27

## RELAY FOR LIFE KICK-OFF

To find out more about the **American Cancer Society Relay for Life** held in our community, join the **Bartlett, Hanover Park, Streamwood Relay for Life** Kick-off, 6:30 p.m. on Friday, 2/22 at the Hanover Township Senior Center, 240 S.

Rte 59 in Bartlett. There will be a Chili Cook-Off. Tickets can be purchased for \$10; children younger than 12 are \$5; free for kids younger than 2 and pre-registered participants. Funds raised go towards the Relay for Life of Bartlett, Hanover Park and Streamwood and the Trisha Lynn Simon Foundation. For tickets or more information, contact [Andy.Fry@cancer.org](mailto:Andy.Fry@cancer.org) or 847-368-1166 ext. 3.

## BUNNY LUNCH

The **Bartlett Woman's Club** annual Bunny Lunch is at noon on Saturday, 3/23 at the Bartlett Community Center, 700 W. Bartlett Road. Tickets are \$7 per person. Reservations are required for children and adults. For tickets, please call Cristina, 630-289-8426.

## COLLEGE SCHOLARSHIPS

The **Bartlett Woman's Club** is again offering its college scholarship to any high school seniors who reside in Bartlett. Applications, due 4/1, are available at the Guidance Offices at Bartlett, Streamwood, Elgin, South Elgin and Larkin High Schools. Other high school seniors, call Ruth Beckner at 630-837-8125 for an application.

**Arts in Bartlett** is also offering its yearly college scholarships, available to any high school senior who plans to get a

degree in the arts. Applications are available at the Guidance Offices at Bartlett, Streamwood, Elgin, South Elgin and Larkin High Schools. All other high school seniors contact Rita Lopienski at 630-956-8814, or [rlopienski@sbcglobal.net](mailto:rlopienski@sbcglobal.net) for an application. Deadline is 4/1.

## 24/7 VIRTUAL LIBRARY

Visit the library without ever leaving your home. The **Bartlett Public Library District's** website is filled with information and access to services. Click on "Research" to see the large list of subscription E-Sources available. Visit [ConsumerReports.org](http://ConsumerReports.org), [Morningstar](http://Morningstar) and more using your Bartlett Library card and PIN. Doing Genealogy research? Visit [HeritageQuest](http://HeritageQuest). Preparing for a test? Go to [LearningExpress](http://LearningExpress) Library for a large selection of tests and tutorials. Learn a new language - Powerspeak has ten language instruction programs. In addition to these resources you can access your Library account, renew and reserve materials, and go to [Overdrive](http://Overdrive) to checkout downloadable e-Books and audiobooks. Explore the website to read teen and book blogs, Pinterest page, [TumbleBooks](http://TumbleBooks) and more. To visit the Bartlett Public Library online go to [www.bartlettlibrary.org](http://www.bartlettlibrary.org).

Please submit information for the April/May Bartletter to: **Gabrielle Infusino, Village Hall, 228 S. Main St., Bartlett, IL 60103** or [ginfusino@vbartlett.org](mailto:ginfusino@vbartlett.org) by Friday, February 22.



## EXPRESS YOURSELF

To e-mail a question or comment to any one of the Village departments, please visit our website and click on "Contact Us" on the homepage. You may also contact the Village by regular mail at: **Village of Bartlett, 228 S. Main Street, Bartlett, IL 60103**

## Keep the Spirit of Earth Day Going...with a Community Parks Cleanup Day



Come one, come all, come clean up your community! The Village, in cooperation with the Bartlett Park District, will be holding a community park clean-up day on Saturday, April 27 from 9 a.m. to noon.

Residents, civic groups and businesses, are invited to keep the spirit of Earth Day going by helping with this clean-up effort. For more information or to sign up for this event, call Scott Skrycki, 630-837-0800. Bags and gloves will be available through the Village.

## Bartlett Phone Directory

Police Service Number	911
Administrative Number	630-837-0846
TDD Service for Hearing Impaired	
Emergency/Non-emergency	911
Fire Emergency Number	911
Non-Emergency	630-837-3701
Bartlett Village Hall	630-837-0800
Bartlett Public Works	630-837-0811
Bartlett Hills Golf Course	630-837-2741
Bartlett Public Library	630-837-2855
Bartlett Park District	630-540-4800
Bartlett Aquatic Center	630-372-7665
Bartlett Post Office	800-275-8777
Bartlett Chamber of Commerce	630-830-0324
School District U-46	847-888-5000
Hanover Township Assessor's Office	630-837-0301
Wayne Township Assessor's Office	630-231-8900

THE VILLAGE OF  
**BARTLETT**

228 S. MAIN STREET  
BARTLETT, ILLINOIS 60103

PRSRT STD  
ECRWSS  
U.S. Postage  
PAID  
Bartlett, IL  
Permit No. 208

**Michael A. Airdo**, Village President  
**Lorna Gilless**, Village Clerk

Trustees  
**T.L. Arends**  
**Patricia Kelly**  
**Gregory A. Martin**  
**Frank Napolitano**  
**Dennis M. Nolan**  
**Eric Shipman**

Newsletter Editor  
**Gabrielle Infusino**

**Postal Customer, Local  
Bartlett, Illinois 60103**