



DECEMBER 2012/JANUARY 2013

Bartletter

progress with pride



From Village Hall to your home
Happy Holidays

Inside this Issue

New Garbage Contract	2
Minute with the Mayor & Energy Savings	3
Electricity Aggregation Update.....	4
Winter & Holiday Safety Tips	5
Winter Golf & More at Bartlett Hills.....	6
Community Calendar	7 & 8
Seasonal Reminders	9
Museum News	10
Bartlett Briefs	11
Pick Up a Chamber Guide	12

New Republic Services Contract Lowers Rates



The Village Board recently approved a new five-year contract with Allied Waste/Republic Services that will lower the cost of monthly service to all residents by 2% during 2013 and provide a free garbage toter to all curbside customers. All garbage, recycling and yard waste collection will continue on Tuesdays, villagewide.

ly homes with dumpsters will be \$11.50. The cost of monthly service will increase by 3% in the second year, 3.5% in the third year, 3.5% in the fourth year and 3% in the fifth year.

The new contract also continues all of the currently existing amenities from Allied Waste/Republic Services, including the free recycling toter, free fall leaf collection, free bulk

In 2013 the monthly rate for single family homes will be \$20.87, multi-family and senior discount homes will be \$19.18 and multi-fami-

item and white goods collection, free removal of small amounts of remodeling materials, and the free Christmas tree recycling program.

Allied Waste/Republic Services yard waste bags will still be needed for yard waste collection during the April 1 to November 30 yard waste season. The cost for Allied Waste/Republic Services yard waste bags will remain at \$15.50 per five-bag bundle throughout the five-year length of this contract.

For questions regarding the garbage, recycling and yard waste collection program, please contact Steven Bosco at 630-837-0800.

Choose the Size of Your New Garbage Toter

As part of the new contract, Allied Waste/Republic Services will provide a free garbage toter to each residence that receives curbside collection. Residents will no longer be required to purchase and provide their own garbage cans.

The new garbage toters are similar to the recycling toters residents already receive, with wheels and lids that make it easier to transport garbage to the curb while keeping litter from blowing down the streets on windy days. Residents will still be able to put garbage that does not fit within the toter out at the curb each week at no additional charge.

From January 1 to January 31, residents will have the option to call Allied Waste/Republic Services at 847-429-7370 or email them at cartdelivery.bartlett@republicservices.com to request a 35-, 65- or 95-gallon garbage toter. Residents that do not specify which size garbage toter they would like will automatically receive a 95-gallon garbage toter. The small, 35-gallon garbage toter will be provided to households eligible for the senior discount or where the head of the household is disabled. A 35-, 65- and 95-gallon toter will be on display at Village Hall for residents to view.

Allied Waste/Republic Services anticipates delivering the garbage toters during March. Once delivered, residents will have a 120 day grace period to exchange their new garbage or current recycling toter for a different size at no additional charge. After the 120 days, a \$20 exchange fee would apply.

Once you receive the new garbage toter, old cans and bins may be placed inside the new toter for disposal. If for any reason your old can does not fit inside the toter, simply place a note on the can requesting that it be discarded and the driver will dispose of it.

The new garbage toters are safer, cleaner, have attached covers, greater stability and are more impervious to animals and insects. They will provide for a cleaner and more attractive looking neighborhood.

A Minute with the Mayor

At this time of year, I am always reminded of the wisdom of the great American writer Marjorie Holmes, who said: "At Christmas, all roads lead home." So, during this wonderful holiday time, I invite you to think about "home." Our home, Bartlett. As you prepare to celebrate the season, I encourage you to shop and dine right here in Bartlett. Doing so will help to keep our local business community vibrant and healthy.

On its website, sustainableconnections.org offers many reasons to "Think Local - Buy Local - Be Local." For example, several studies have shown that when you buy from an independent, locally owned business, significantly more of your money is used to make purchases from other local businesses and service providers -- continuing to strengthen the economic base of the community. It is always good when we, ourselves, can be part of Bartlett's "economic development."

In addition, local businesses are owned by people who live in our community and are invested in Bartlett's future. They are employers that provide jobs to community residents, and they take more time to get to know customers and offer good service to the people who often are their neighbors and friends. Just as important, it is our local businesses that help to support our not-for-profit civic organizations through generous donations of their time, talents, and treasures.

Shopping locally also puts your tax dollars to good use. It's a fact that when you shop in

Bartlett, state sales taxes come back to fund Village services.

Bartlett's downtown offers shopping, dining, and professional services. The commercial strips along Route 59, Army Trail Road, and West Bartlett Road offer mom-and-pop businesses next to nationally known retailers and service providers.

Everyday needs, such as groceries and gas, are "never far away," and should be purchased right here in town. Speciality gifts, antique treasures, and festive flowers can be bought just down your street. Bartlett hosts the finest insurance agents, medical professionals, tradesmen, and hair stylists in the northwest suburbs. Please, patronize them!

A wide variety of restaurants are also available in the Village. For a link to Bartlett's Dining Guide visit the Economic Development webpage at www.village.bartlett.il.us/ecdevelopment.html.

Once again, as you shop and dine this month and in the months of the new year that lie ahead, please remember to "Think Local" -- think Bartlett First!

Finally, I wish you and your family a joyful holiday season, and a very happy and prosperous 2013.



Michael A. Airdo

Lower your Energy Bills & Receive Rebates.

For a limited time, the U.S. Department of Energy and local utilities and non-profits are together offering a cost-saving program called Energy Impact Illinois to all Chicagoland homeowners to make their homes more comfortable and energy efficient.

The program is offering a home energy assessment for \$49 (\$400-\$800 value) or a FREE energy assessment to homeowners who host a house party to spread the word to friends. A contractor will test your home's leakage, airflow and the efficiency of your combustion appliances and provide a detailed report of recommendations and costs. You are under no obligation to proceed with the work.

However, Energy Impact Illinois is offering substantial savings to those who do. Receive an instant rebate of 70% (up to \$1750) for proceeding with the insulating and air sealing recommendations. Energy Impact Illinois is also providing access to low-interest loans (0% first-year interest on loans greater than \$2500) through partnerships with several local banks and credit unions, which can be used for boilers, furnaces, windows or other energy efficiency improvements.

And if you reduce your energy usage (which most participants do) by at least 15%, you'll increase the value and marketability of your home.

Energy Impact Illinois provides approved contractors and a friendly call-center staff, who will take you through the process, from phone-in application to the completion of the work. To apply for the program or for more information, please contact Peter Maslanka at peter@energyimpactillinois.org or 847-323-6454 or visit <http://www.energyimpactillinois.org>.

Electricity Aggregation Update



Due to recent legislation, Illinois residents are able to save money on their electric bill by switching from their established electricity supplier, such as ComEd, to a third party energy supplier. Municipalities also can seek lower electricity costs on behalf of their residents and eligible small businesses through aggregation.

Communities are choosing to pursue aggregation because they may be able to help their residents and eligible small businesses save money by creating a combined customer group that has more buying power than individual residents and businesses. Pursuing aggregation for Bartlett would require residents to approve a referendum during the April 2013 elections.

Although Bartlett residents voted down a March 2012 referendum that would have allowed the Village to negotiate rates with a third party provider

on their behalf, board members have since been asked by some citizens to revisit the issue of aggregation.

If an April 2013 referendum were to pass, the Village would go through a public bidding or proposal process to select an electricity supplier. After a contract is approved, residents would be notified and would have the opportunity to opt out of the program.

Residents who choose to stay in the program would continue to receive a monthly bill from ComEd. Regardless of which company is actually producing your electricity, ComEd would remain as your distributor. ComEd would also continue handling resident complaints and respond to outages.

Any resident or business that has already signed up for a third-party electricity provider on their own would not be included in the aggregation program unless they opt-out of the program they selected individually and join the Village's program.

Because the process for municipal aggregation requires a referendum to be passed and a public bid or proposal process, residents and small businesses included in the program would not see savings in their electric bill until late summer or fall of 2013.

In the meantime, one savings option for Bartlett residents and small businesses is to sign up for the Clean Air Counts Energy Savings program. Bartlett residents are eligible for this program because the Village is a member of the Metropolitan Mayors Caucus Clean Air Counts Program, a voluntary initiative to improve air quality in the Chicago metropolitan area.

Through this program, Clean Air Counts has already secured electricity pricing with Integrys Energy until June 2013 that is 29.7% cheaper than ComEd's current electricity rates. To learn more about the Clean Air Counts program or sign up, please visit www.cleanaircounts.org and click on the Energy Savings Program with the Energy Choices icon.

Residents interested in choosing a third-party electricity provider individually should read all of the terms and conditions being offered and be aware that many of the programs available, including the Clean Air Counts program, require agreements that include an early-termination fee.

For more information regarding electricity aggregation, please contact Assistant to the Village Administrator Steven Bosco at 630-837-0800.

Recycle Your Holiday Lights

The Village of Bartlett will be collecting holiday lights that are broken or that you no longer need. Collected lights will be recycled properly with the assistance of Elgin Recycling.

The holiday light recycling program will be available from Tuesday, November 27 through Friday, March 1. You can drop off lights at Village Hall, 228 S. Main St., during regular business hours, Monday through Friday, 8:30 a.m. to 4:30 p.m. and on Saturday from 9 a.m. to noon.

Lights Accepted: Italian mini-lights, C7 lights, C9 lights, rope lights, and LED lights. Extension Cords will also be accepted.



POLICE BEAT



Steps for Holiday Safety

The Bartlett Police Department offers the following safety suggestions to deter thefts and other criminal activity this holiday season:



- ~ Remember to remove all electronic devices and other valuables from your vehicle, lock your doors, and close your garage door before going to bed.
- ~ Residents are encouraged to participate in the free vacation watch service if they are going out of town for the holidays.
- ~ Avoid announcing your vacation plans or posting vacation pictures on social networking sites, such as Twitter or Facebook, until after you return home.
- ~ Ask a friend or a neighbor to park their vehicle in your driveway or have them create footprints or tire tracks if it snows while you are out of town.
- ~ Refrain from leaving wrapped or unwrapped holiday gifts in plain sight of your residence.
- ~ Consider canceling your mail or newspaper delivery if you plan on traveling during the holiday season or ask a neighbor to pick them up for you.
- ~ Make sure to break down large cardboard boxes of expensive gifts and electronic devices before you put them out at the curb for disposal.
- ~ Make arrangements for a friend or a neighbor to pick up your packages if you are expecting a delivery when you are not home.
- ~ Use timers to activate lights, radios, and televisions inside your residence when you are out of town to give the illusion that someone is home.

Finally, the Bartlett Police Department encourages residents to immediately call 9-1-1 if they observe any suspicious activity in their neighborhoods.

Winter Driving Tips

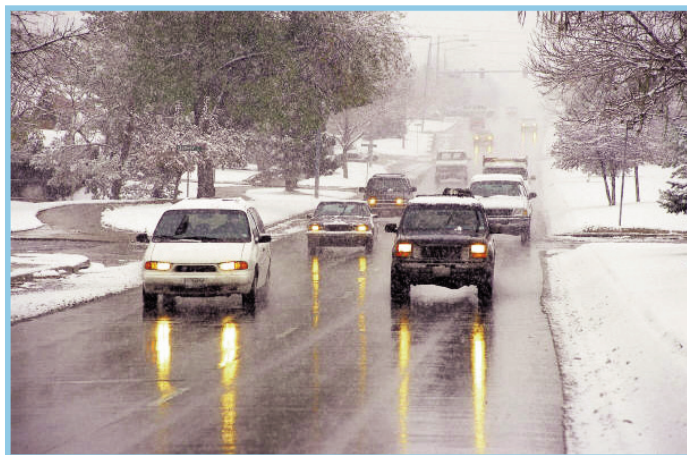
- ~ Make sure to remove any snow or ice from your vehicle's windshield, windows, headlights, and taillights before driving.
- ~ Monitor weather conditions and allow yourself plenty of time to reach your destination safely.
- ~ Reduce your speed and leave plenty of room between vehicles to stop safely.
- ~ Take it slow when merging into traffic.

Sudden movements can cause your vehicle to lose control.

~ Remember, four-wheel-drive does not mean four-wheel-stop. A four-wheel-drive vehicle will not stop any better or faster in snow and icy conditions.

~ Accelerate and decelerate slowly. Applying the accelerator slowly is the best method for regaining traction and avoiding skids. Apply firm and steady pressure when applying the brakes.

~ Make sure your gas tank is at least half full to avoid your fuel line from freezing.



The Bartletter is printed on recycled paper using soy ink.

Winter Golf & More

WINTER GOLF (Golf Course Remains Open)

Grab your hat, gloves and clubs and prepare to tee off. The Bartlett Hills Golf Course offers **Winter Golf**. Golfers are permitted on the course, using regular greens, December through February. Of course, this is only available when the weather and ground conditions are appropriate. Call the Golf Shop at 630-837-2741 for availability.

GOLF SHOP

Is there a golfer on your holiday shopping list? Bartlett Hills Golf Shop has a great selection of gift items, including **Gift Cards** for lessons, golf fees and merchandise. All in-stock merchandise is on sale at 20% to 50% off the regular retail price.

The shop will be open Monday through Friday, 9 a.m. to 4 p.m. and Saturday, 9 a.m. to 3 p.m. through December 23. It will be open 9 a.m. to 1 p.m. on December 24. After Christmas, Golf Shop hours are 9 a.m. to 4 p.m., Tuesday through Friday; on Saturday from 9 a.m. to 3 p.m. and also on Sunday and Monday if the golf course is open for winter play.

CROSS-COUNTRY SKIING

Enjoy the winter wonderland at Bartlett Hills from a pair of cross-country skis. Watch the wildlife, get exercise and make the most of the snowy weather.

The golf course is open to cross-country skiers who have their own equipment whenever there is **at least four inches of snow on the ground**. Staff will groom the trails, but equipment rental is not available.

BARTLETT HILLS RESTAURANT

The Grill Room at Bartlett

Hills will be closed until mid-March, with the exception of the **Friday Night Fish Fry**, which starts on February 15 and is available Fridays from 5 to 8 p.m. through March 29. Bartlett Hills will continue to provide banquet service, so call the food and beverage staff at 630-213-3103 to book holiday parties, meetings and special events. You can also visit www.bartletthills.com for all the menus and information on Bartlett Hills.

The friendly staff is always available to help you plan everything from a small get-together to an elegant occasion that you will always remember.

SPECIAL EVENTS

Mark your calendar because Bartlett Hills Golf Club is hosting a **Craft & Vendor Show**



on Saturday, February 2 from 10 a.m. to 4 p.m. Many new crafters and vendors this year.

Admission is \$1 or Free with donated canned goods for Hanover Township's Food Pantry. There will also be Raffles! Raffles! and more Raffles! to benefit the Breast Cancer Research Foundation.

For more information, please call 630-213-3103, e-mail mgearhart@vbartlett.org or visit www.bartletthills.com. Interested crafters and vendors are also invited to call.

Special Olympics

The Village of Bartlett will again be the site for the Northeastern Illinois Special Olympic Winter Sports Games. The games will be on Sunday, January 6, at Bartlett Hills Golf Course. Opening ceremonies will begin at 9:30 a.m. followed by cross-country skiing and snow shoe competition for various age groups and skill levels. The games include short-distance sprints as well as events that cover 500-meter and 1-kilometer courses.

The Village is proud to welcome these athletes to Bartlett Hills for another consecutive year and, as in the past, everyone in the community is invited to participate. Volunteers will time the races, distribute the ribbons and cheer on and congratulate the participants. If you are enthusiastic and would enjoy an afternoon of winter sports and fun competition, you are needed at the Bartlett Games.

To become part of this great day or for more information about the 2013 Northeastern Illinois Special Olympic Winter Sports Games, please call the Special Olympics office at 630-377-7250 or e-mail: akaylor@soill.org.

December 2012

SUN	MON	TUES	WED	THURS	FRI	SAT
<p>“The test of our progress is not whether we add more to the abundance of those who have much, it is whether we provide enough for those who have little.”</p> <p>~ Franklin D. Roosevelt, 32nd President of the United States</p> <p>Character Counts! in Bartlett</p>						1
2	3	4	5	6	7	8
		Village Bd Mtg 7 pm		ZBA Mtg 7:30 pm		
9	10	11	12	13	14	15
	EDC Mtg 7:30 pm			Plan Comm 7:30 pm		Coffee w/the Board & Police Dept News, 9 am Village Hall
16	17	18	19	20	21	22
		Art Reception @ Village Hall Gallery, 5:30 to 6:45 pm			WINTER BEGINS	
		Village Bd Mtg 7 pm		<p>Village Hall will be closed December 22 through 25 and also December 29 through January 1. The Village of Bartlett elected officials and staff wish you a wonderful holiday season and a very happy New Year.</p>		
23	24	25	26	27	28	29
		CHRISTMAS				
30	31					

January 2013

SUN	MON	TUES	WED	THURS	FRI	SAT
		1 NEW YEAR'S DAY	2	3	4	5
Depot Museum will be closed Dec. 20 to Feb. 2. Please visit the museum when it reopens on Saturday, Feb. 2.						
			Republic/Allied Tree Pickup, see page 9	ZBA Mtg 7:30 pm		
6	7	8	9	10	11	12
Special Olympics, 9:30 am at Bartlett Hills		Republic/Allied Tree Pickup, see page 9		Plan Comm 7:30 pm		
13	14	15	16	17	18	19
	Historical Society mtg 7pm @ Bartlett Library	Republic/Allied Tree Pickup, see page 9				
	EDC Mtg 7:30 pm	Village Bd Mtg 7 pm				
20	21	22	23	24	25	26
	MARTIN LUTHER KING DAY					Prescription Drug Dropoff @Village Hall 9 am to noon
27	28	29	30	31	<p>"For attractive lips, speak words of kindness" ~ Audrey Hepburn, actress and humanitarian</p> <p>Character Counts! in Bartlett</p>	

Due to the Holidays...

Please note that the Village WILL NOT hold its monthly prescription drug/sharps drop-off at Village Hall on December 29 due to the holiday weekend. The prescription drug drop-off program will resume on the last Saturday in January from 9 a.m. to noon at the Main Office in Village Hall.



For more information about the program, visit the Health & Safety page on the Village of Bartlett website, www.village.bartlett.il.us.

Don't Forget the Lights!



Holiday lighting and displays are permitted on private property for a period **NOT TO EXCEED** 90 days. Please take down all lights and decorations in a timely fashion once the holidays have ended.

Also Village code requires all RVs, boats and trailers be removed from driveways by November 1 until May 1. Snowmobiles and their trailers are allowed on driveways starting November 15 until April 15.

Snowy Weather Ahead?



While the winter of 2011-12 brought warmer temperatures and little snow, history shows that is more the exception than the rule for Illinois winters. Freezing temperatures, snow and ice are the winter norm for the area, and Bartlett Public Works salt trucks and snowplows are always ready.

Bartlett streets are plowed in the following order: main streets, secondary collector streets, cul-de-sacs and dead-end streets. Priority is given to the most heavily traveled streets.

Parking on Village streets is prohibited after 2 inches of snow has fallen to allow plows to remove snow and completely clear the street. It's a good idea to wait until after the final pass of the plow to shovel the end of your driveway.

Please **DO NOT** shovel snow into the street. This can cause the formation of ice patches and can potentially result in serious accidents.

The Village clears snow from sidewalks surrounding public buildings and the commuter areas it maintains. The Village does not clear neighborhood walks.

Please be a snow angel and shovel your sidewalk, so school children and other pedestrians in your neighborhood can walk with greater ease and safety. Also, please clear snow from around fire hydrants and storm sewers. If you have any questions or concerns regarding snow removal, please call the Public Works Department, 630-837-0811.

Holiday Tree Collection

Republic Services/Allied Waste will be picking up holiday trees on Wednesday, 1/2, Tuesday, 1/8 and Tuesday, 1/15. Simply place your tree on the curb with your regular garbage and recycling materials.

All ornaments and tinsel must be removed from the tree. **Do not place the tree in a plastic bag.**

Bartlett's Girl Scout Heritage

This year the Girl Scouts of America is celebrating its 100th anniversary. To commemorate this milestone and to highlight the Village's own Girl Scout story, the Bartlett History Museum presents the exhibition "Snips, Snaps and Sentiments, A Scrapbook of Bartlett's Scouting Heritage."

Bartlett's scouting story began in 1929, when a lone troop was formed under the leadership of Estella Schnadt. Shown in the back row, third from right in this photo of a 1931 hike, Schnadt served as Bartlett's leader for more than a decade.



Through images, uniforms, handbooks and more, the early history of Girl Scouts in the community is exhibited in a "scrapbook" style. One "scrapbook" has been intentionally left blank for current and former Bartlett scouts and leaders to create additional pages of history. Remembrances, pictures, etc. can be brought to the museum, where they will be affixed to the "scrapbook" for all to enjoy. These additions will become part of the museum's collection, so bring copies of images, for example, if you want to keep the originals.

All levels of Girl Scouts are encouraged to visit the exhibition. Contact Pam Rohleder, director, at 630-837-0800 to arrange a free tour for your troop. All scouts will receive a patch and a chance to enter a drawing to win a Girl Scout scrapbook kit.

Firemen's Festival Shout Out!

The Bartlett History Museum is looking for personal remembrances, photos, slides and especially movies from the annual Bartlett Volunteer Firemen's Festivals, held from 1938 to 1969 in Bartlett Park. Next year, 2013, marks the 75th anniversary of this beloved event. The museum will be creating an exhibit about it. Please contact Museum Director Pam Rohleder at 630-837-0800 or prohleder@vbartlett.org.

From the Archives



On December 30, 1937, the Bartlett Woman's Club, the Village's first service organization, was formed. From its modest beginnings as the 9-member Bide-a-Wee Club in 1936, the 75 year-old club boasts more than 40 members today. It continues to serve the community, promote fellowship and more.

One charter member was Irene Kelly Schultz, who came to Bartlett in the early 1910s to teach at Bartlett School. Schultz, pictured here in 1955, held many offices in the club and worked tirelessly on its efforts. In 1962, having been active for 25 years, she became the club's first Silver Star Member. On June 5 of that year, Schultz was recognized with a pin signifying this milestone.

The sterling silver bar pin features a dangling brushed circle with a star and pearl center. On the back is engraved, "25 YRS. B. W. C. 1962." The 50 year-old pin was recently donated to the museum by Schultz's grandson.

Congratulations Bartlett Woman's Club on this landmark anniversary!

Down at the Depot

The **Bartlett Depot Museum will be closed from December 20 to February 2** for annual maintenance. Families are invited to come to the museum when it reopens on Saturday, 2/2 to create a Valentine craft for themselves or a loved one.

BARTLETT BRIEFS

CHILL OUT & READ

Children from birth through grade 6 can join the **Bartlett Public Library District** Winter Reading Club and "Read to Succeed." Each child who completes the program, which runs from 12/21 to 3/2, receives a book. Co-sponsored by the Chicago Wolves and the Friends of the Library. Call 630-837-2855 or visit www.bartlett.lib.il.us.

HOLIDAY BREAD BASKET

The **Bartlett Lions Club** is providing holiday meals for local families in need. Donations are needed to buy food, which will be distributed through schools and the food pantry in December. If you can help, please send your contribution to: Bartlett Lions Club, c/o Norm Wetherton, 488 S. Hickory, Bartlett, IL 60103.

CLAUSE & EFFECT WRAPUP

After 30 years, the little charity known as **Clause & Effect** is saying goodbye. It is a bittersweet time, but all good things must come to an end. Because Bartlett has been home for the past 25 years, Clause & Effect wants to especially thank all of the Bartlett residents for extending a helping hand and playing Santa to all of the needy throughout

these many years. It is estimated that Christmas gifts have been delivered to more than 50,000 underprivileged children in Chicago and the suburbs during the past three decades. The North Pole was the kitchen table and the Santas were everyday caring and giving people who contributed out of the kindness of their hearts.

One of the highlights of Clause & Effect was The Bike Drive of '05. Forty inner-city kids were surprised with 40 new bikes at a Christmas party. To commemorate Clause & Effect's 30th year and to warm your hearts with the excitement that was generated that day, the Bike Drive of '05 was posted on YouTube in November for all the world to see.

Thank you for the many, many years of support. May your days be Merry & Bright! donna Hinrichs & Angelo Capozio, founders of Clause & Effect

THE PERFECT GIFT

Founded in 2000, the **Bartlett Public Library District** Foundation was established to provide additional sources of revenue to enhance Library services. Projects funded in recent years have included furniture, a Wall Street

Journal subscription, materials and programs on health, and the funding of genealogy databases and materials.

You can become a member of the Foundation with a yearly contribution of \$25 or more. Looking for a gift for that hard-to-buy-for friend or relative? Give them a gift of membership to the Bartlett Public Library District Foundation. A gift to share with the community! Foundation brochures are available at the Library or online at www.bartlettlibrary.org. To learn more, contact Director Karolyn Nance, 630-213-5001 or knance@bartlett.lib.il.us.

SCHOLARSHIPS

The **Bartlett Woman's Club** annual college scholarship is available to any high school senior who resides in Bartlett. Applications, due April 1, are at the guidance offices at all U-46 high schools. Seniors at other schools can call Ruth Beckner, 630-837-8125.

HISTORICAL SOCIETY

The **Bartlett Historical Society** meets at 7 p.m. the second Monday of the month at the Bartlett Public Library. No December meeting.

Please submit information for the February/March Bartletter to: Gabrielle Infusino, Village Hall, 228 S. Main St., Bartlett, IL 60103 or ginfusino@vbartlett.org by Friday, December 28.



EXPRESS YOURSELF

To e-mail a question or comment to any one of the Village departments, please visit our website and click on "Contact Us" on the homepage. You may also contact the Village by regular mail at: Village of Bartlett, 228 S. Main Street, Bartlett, IL 60103

BUSINESS & SERVICES GUIDE



The 2012/13 Bartlett Chamber of Commerce Business & Services Guide is now available. It includes:

* Complete member listing by business category as well as alphabetical listing

* New this year, this book also includes a community profile

You will not see this book in your mailbox. However, it is available at many locations, including Bartlett Village Hall, the Bartlett Park District Community Center, the Bartlett Public Library, the Bartlett train station and Hanover Township Senior Center. It is also available at more than 45 businesses in and around Bartlett or electronically at www.novoprint.com/bartlettezbook.html.

If you are unable to find the directory at one of these locations, would like a copy mailed to you or would like copies for your business, please contact the Chamber Office, info@bartlettchamber.com or 630-830-0324.

Bartlett Phone Directory

Police Service Number	911
Administrative Number	630-837-0846
TDD Service for Hearing Impaired	
Emergency/Non-emergency	911
Fire Emergency Number	911
Non-Emergency	630-837-3701
Bartlett Village Hall	630-837-0800
Bartlett Public Works	630-837-0811
Bartlett Hills Golf Course	630-837-2741
Bartlett Public Library	630-837-2855
Bartlett Park District	630-540-4800
Bartlett Aquatic Center	630-372-7665
Bartlett Post Office	800-275-8777
Bartlett Chamber of Commerce	630-830-0324
School District U-46	847-888-5000
Hanover Township Assessor's Office	630-837-0301
Wayne Township Assessor's Office	630-231-8900

THE VILLAGE OF
BARTLETT

228 S. MAIN STREET
BARTLETT, ILLINOIS 60103

Michael A. Airdo, Village President
Lorna Gilles, Village Clerk

Trustees
T.L. Arends
Patricia Kelly
Gregory A. Martin
Frank Napolitano
Dennis M. Nolan
Eric Shipman

Newsletter Editor
Gabrielle Infusino

**Postal Customer, Local
Bartlett, Illinois 60103**

PRSRT STD
ECRWSS
U.S. Postage
PAID
Bartlett, IL
Permit No. 208