



# Bartlett

APRIL/MAY 2013

progress with pride

## Take Me 'Back' to the Fair

Come take a look into Bartlett's past and learn about two world expositions that were revolutionary. "Bartlett Visits the Fairs" is a new exhibit displaying the history of the 1893 and the 1933 Chicago World's Fairs and the Bartlett residents that attended them. The two-part exhibit will start at the Bartlett Public Library and then move to the Bartlett History Museum.

From April 5 to 26, you can see souvenirs from both fairs at the Bartlett Public Library, 800 South Bartlett Road. The full exhibit, consisting of souvenirs,



stories and images, will be on display during "Meet Me at the Fair" the Bartlett Public Library District Foundation's fundraiser on Friday, April 19. Souvenirs include an 1893 advertisement paperweight, a 1933 Western Union telegram and two charming 1933 parasols that were donated to the Bartlett History Museum by former Bartlett resident Violet Haase.

Haase was just a young girl during the time of the 1933 Century of Progress fair. She and her family did not attend due to the hard economic times of the Great Depression. She obtained the parasols from her late husband Eugene Haase, who also resided in Bartlett and attended the fair with his family. Haase kept the parasols for all these years, until she was contacted by the Bartlett History Museum, which was looking for items and personal reminiscences from both Chicago fairs. She donated them to the museum with much enthusiasm.

Beginning May 1, the full exhibit will be on display at the Bartlett History Museum, located in Bartlett Village Hall, 228 South Main Street. The museum is open Monday through Friday, 8:30 a.m. to 4:30 p.m. and Saturday, 9 a.m. to noon.

Admission is free. Everyone is invited to come and discover Bartlett's history and its ties to the great Chicago World's Fairs.

The museum continues to look for objects and memories of Bartlett residents who attended the fairs in 1893 and/or 1933. Donate today by contacting Museum Director Pam Rohleder, 630-837-0800 or [prohleder@vbartlett.org](mailto:prohleder@vbartlett.org).

**In June there will be something to celebrate at the Bartlett Depot Museum! Everyone is invited to the party! Look for full details in the next Bartletter!**

### Inside this Issue

Building Dept News & Safe City Ranking .....	2
A Minute with the Mayor.....	3
Tree Care, Hydrant Flushing.....	4
Bartlett Hills News, .....	5
Zoned for Business, Tax Rebate, Toters.....	6
Community Calendar .....	7 & 8
Brush Collection Schedule.....	9
Museum News & more .....	10
Bartlett Briefs.....	11
Memorial Day Walk.....	12



## Building Permit? -- check

Get all the permit information you need before starting your next home project. Pick up your Home Improvement Guide at the Earth Day celebration at the Bartlett Nature Center in James "Pate" Philip State Park, 2054 W. Stearns Road, on Saturday, April 20 from noon until 4 p.m.

Bartlett Building Department staff can answer your questions about the 2012 Illinois Energy Conservation Codes and guide you through the details for proper permitting so that your home not only looks great when you are done with your project but can be safely enjoyed for many years. There also will be coloring books for the kids and free CFL light bulbs.

Building permits are required because your home or business is an investment. If your construction project does not comply with Village codes, the value of your investment is reduced. Property insurers may not cover work done without permits and inspections. If you decide to sell a home or building that has had modifications without a permit, you may be required to make costly repairs. Also, by following code guidelines, the completed project will meet minimum standards of safety and will be less likely to cause injury to you, your family, your friends or future owners.

If you are hiring an outside contractor for your next home project, please make sure whoever you hire is licensed and bonded to work in the Village. For a link to a list of licensed contractors, visit the Building Department page on the Village website, [www.village.bartlett.il.us](http://www.village.bartlett.il.us).

The Building Department also reminds residents that May is national "Building Safety Month," with a focus on a different topic each week: Week 1 - Fire Safety & Awareness; Week 2 - Disaster Safety & Mitigation; Week 3 - Backyard & Pool Safety; Week 4 - Energy & Green Building. Residents can visit [www.buildingsafetymonth.org](http://www.buildingsafetymonth.org) for more information.

## Village Ranked 4th Safest City

Bartlett has been ranked the fourth safest city in America by [www.neighborhoodscout.com](http://www.neighborhoodscout.com) and is the only municipality in Illinois ranked in the top 10.

According to the website's analysis of 2011 FBI crime statistics, Bartlett is safer than 89% of the cities and towns in the U.S. of all population sizes. If you live in Bartlett, your chance of becoming a victim of crime in the community is 1 in 135. The U.S. average across communities, from largest to smallest is 1 in 30.

NeighborhoodScout looked at the seven offenses from the uniform crime reports, collected by the FBI from 17,000 local law enforcement agencies, including both violent and property crimes. Violent crimes such as assault, rape, murder and armed robbery hap-

pen less often in Bartlett than in most of America. Your chance of becoming a victim of a violent crime here is one in 2,591, which is a violent crime rate of zero per 1,000 inhabitants.

NeighborhoodScout's analysis reveals that the property crime rate in Bartlett is below average. This means that you are less likely to become a victim of arson, motor vehicle theft, larceny, or burglary in Bartlett than in most communities in America. Your chance is just one in 143.

The Massachusetts based company began in 2002, and the website is owned by Location, Inc. The company touts itself as "a geographic research and data mining company born of university research, specializing in location analysis, demographic and

school data information products, and location-based decision-making tools for businesses and consumers."

Village President Michael Airdo in response to the ranking information stated, "Bartlett's commitment to safety is unparalleled. Our ongoing strategy is to engage the community directly to determine the best course of action regarding a given problem. We believe in being proactive and connected to our residents with a solution-oriented mindset. While we are proud to have earned this distinction, there is no finish line for fighting crime, and we strive to remain vigilant to our mission of community safety."

More information may be found at [www.neighborhoodscout.com/il/bartlett/crime](http://www.neighborhoodscout.com/il/bartlett/crime)

## *A Minute with the Mayor*

When Gerald Ford was sworn in as President of the United States, he said: "I have not sought this enormous responsibility, but I will not shirk it." These were the sentiments I felt when my colleagues on the Village Board selected me to serve as Village President in November of 2011.

I accepted the responsibility, knowing full well, that I was at the end of my term in service to Bartlett. Yet, the duties of Village President had to be fulfilled. And, even though some saw the transition time as an opportunity for political skirmishing, I wish to assure you that it has been a true honor to serve you for this past year and a half as your Mayor.

During my time as Village President, the highlight was meeting the truly amazing people who live in our amazing Village. I was so proud to attend an Eagle Scout Court of Honor Ceremony, celebrate with a father and son team who supported wounded veterans by taking them to football stadiums across the country, and recognizing the many residents who have distinguished themselves in service to others day-after-day.

I also wish to express my thanks and appreciation to you for allowing me to work on your behalf for 12 years on the Board of Trustees. During this time, our Village has grown by more than 5,000 people. Our community has grown not just by population, but through annexation of nearby land, as well. Recently, the beautiful BAPS Shri Swaminarayan Mandir Complex was proudly annexed to our Village. Last Memorial Day Weekend, we officially dedicated Phase I of the Bartlett Veterans Memorial. What an awe-inspiring tribute to the men and women who served America.

We have no power plant. The balefill property was purchased by the State of Illinois, ending a 16-year legal fight that went all the way to the United States Supreme Court. We now have this land as open space.

Our first continuing care and senior housing communities opened their doors, and serve as an example of how local government, business and residents can work together to fill housing needs. As an outgrowth of those developments, and to be responsive to the unique needs of our growing senior population, the Village created the Elder Service Team.

When we first think of Bartlett, we think of our homes and the people who live here, but you

may not realize that our various business parks cover 980 acres. The Brewster Creek Business Park continues to be one of the bright spots in our economic picture.

The Brewster Creek Business Park is no secret, but did you know that it is home to 70 businesses and 1,500 employees? The Park's businesses range from smaller condominium units like the Bark Avenue Daycamp to larger users like local food distributor Greco and Sons and pasta maker Rana Meal Solutions.

The Bluff City/Blue Heron Business Park property was annexed into Bartlett during my first term as trustee. It is here that heavier industrial users can find a home in the Village. Four hundred feet underground is a limestone mine that Vulcan Materials uses to produce highway grade materials for many of the region's major road projects. Vulcan Materials is North America's leading producer of construction aggregates, including crushed stone, sand and gravel. Clearly, there is more to Bartlett than meets the eye.

The Village's Strategic Plan has guided our growth and focused on maintaining our infrastructure, providing high quality services, and fostering economic development. During the latter half of my time on the Village Board, the economy tumbled. Yet, despite the challenges, we were able to maintain a balanced budget, level taxes, a high Moody's bond rating, as well as our high service levels, through judicious cuts and thoughtful allocation of resources.

I am proud of the continued accreditation of our Police Department by The Commission on Accreditation for Law Enforcement Agencies (CALEA) and proud that Bartlett has been named the 4th safest community in the United States.

Several major capital projects that began during my tenure on the Village Board will continue, including the 2012 Road Resurfacing program, the Brewster Creek Stormwater Project and the Streamwood/Prospect Avenue Drainage Project.

All of these notable accomplishments were done with the assistance of our impeccable Village Administrator, Valerie Salmons. Valerie's great acumen and insight has been invaluable to me as an



**Michael A. Airdo**

**continued on page 5**

# April is All About Trees

by **Keith Johnson, arborist**

With spring tree planting about to start and hot, dry weather not far behind, residents will soon begin inquiring about proper tree, shrub and plant watering. There is no set or easy answer; temperature, tree species, tree site exposure, wind speed, humidity, drainage, restricted root zones and physical soil properties all factor into proper watering strategies. Basically it comes down to what people used to call having a "green thumb."

The primary cause of newly planted tree mortality is underwatering, the secondary cause is overwatering! A newly planted tree ordinarily will require three years supplement-


tal watering after planting. If there is more than average rainfall, supplemental watering may not be required and could even be detrimental.

The first step to proper watering actually is maintaining a mulched area around the plant. Wood chips or other organic material, no more than four inches deep, distributed out to the drip line will keep soil surfaces from drying out too quickly. Take care not to let mulch touch the tree trunk as this can cause fungal problems. About once a week pull some of the mulch back and check soil moisture. It should feel cool and moist but not wet or saturated.

A more certain method of checking soil moisture entails

digging a hole six to eight inches down with a trowel or bulb planter and examining the soil for moisture. It's far better to anticipate tree watering requirements than to play catch up with a drought stressed tree.

A drought stressed tree may exhibit some visual signs of stress, including leaf margin scorch, leaf curling, yellowing and early leaf drop. Some of Bartlett's common parkway trees that are prone to drought stress include willow, red maple, bald cypress, alder, swamp white oak, pin oak and birch trees. Some common trees that tend to be drought tolerant include hickory, ginkgo and Kentucky coffee tree. A few tree varieties are both drought and wet tolerant; these include Freeman maple, horse chestnut, hackberry, honeylocust, sycamore, shingle oak and bur oak. Let's hope for a mild growing season with ample but normal rainfall!



The Village of Bartlett will be handing out 1 to 2-foot tall bur oak seedlings at the Earth Day celebration at Bartlett Nature Center on Saturday, April 20. Any leftovers will be handed out at the first Farmers Market of the season on June 7.

Bartlett will continue to fight the Emerald Ash Borer by trunk spraying parkway ash trees in Williamsburg Hills, Williamsburg Square, Country Place, Tallgrass and Wilcox Lane. Spraying will begin at the onset of leaf-out, usually in April. These treatments are not a surefire cure but have proven effective for prolonging the life of treated trees.

## Hydrant Flushing

It's time for Bartlett Public Works to flush all fire hydrants. This process removes iron deposits from the water mains and ensures that hydrants are working correctly.

The flushing may cause temporary water discoloration. Please check for discolored water before doing any laundry during the dates the hydrants in your area are being flushed.

Flushing will be done according to the following schedule.

**April 8 - 18: Area 1 - north of Stearns Road**

**April 19 - 25: Area 2 - south of Stearns Road**

# Head Fore the Hills

## TEE TIMES

Reservations are accepted up to one week in advance by calling the Golf Shop at 630-837-2741. Internet tee times are accepted up to 10 days in advance by visiting the Bartlett Hills website, [www.bartletthills.com](http://www.bartletthills.com). Normal Golf Shop hours are Monday through Friday, 6:30 a.m. to 7 p.m. and weekends, 5:30 a.m. to 7 p.m. Hours of operation vary depending on the time in the season.

## PRACTICE RANGE

The practice range is open 6:30 a.m. to dusk on weekdays and 5:30 a.m. to dusk on weekends. Balls cost \$5 for a small bucket and \$8 for a large bucket.

## GOLF LESSONS

The Bartlett Hills PGA professionals, Bob Gavelek and Phil Lenz, offer golf lessons six days per week, by appointment only. Individual, series and group lessons are available. Call the Golf Shop at 630-837-2741 for more information.

May is **FREE Lesson Month**, a PGA of America program. Gavelek and Lenz will be offering free 10-minute lessons all month. Please call for available lesson times.

## JUNIOR GOLF

The Bartlett Hills Junior Golf Program will again be offered this summer. For Junior Golf Program dates and complete details, visit [www.bartletthills.com](http://www.bartletthills.com).

Properly fitted clubs are important to junior golfers. The Golf Shop stocks junior clubs, and staff is able to fit children ages 3 to 14.



## BARTLETT HILLS RESTAURANT

Bartlett Hills is open daily for lunch, offering a variety of soups, salads and sandwiches. Call in advance to have your lunch ready when you arrive. The entire menu is also available for takeout. Restaurant hours will be extended in May to accommodate golfers and evening guests.

A champagne brunch will be offered from 10 a.m. to 2 p.m. on Mother's Day, May 12. Brunch will include an omelette station, pancake station, classic breakfast items, prime rib, baked ham, roast turkey and seafood selections, and a fabulous pastries and sweet table. Reservations are required, so call early. Tax and service charge added to each check.

If you would like to host a special occasion at Bartlett Hills, please call the food and beverage department, 630-213-3103.

## WEB SITE

Visit [www.bartletthills.com](http://www.bartletthills.com) to stay informed about activities at Bartlett Hills Golf Club, which has earned a **4 1/2 star rating** as a Top Public Course from Chicagoland Golf.

## A Minute with the Mayor (continued from page 3)

elected official during these past years. Words cannot capture the appreciation I have for her and the entire Village Staff!

Bartlett will have a new Village President shortly, and I wish our new Mayor good luck and Godspeed. I know the new Village Board will continue to thoughtfully lead our Village.

I close, as I opened, with the wisdom of President Ford: "I am sure I have done things I might have done better or differently, or not at all. I have also left undone things that I should have done. But I believe and hope that I have been honest with myself and with others, that I have been faithful to my friends and fair to my opponents, and that I have tried my very best to make this great Government work for the good of all Americans."

Serving the Village of Bartlett has been one of the greatest privileges in my life. I love this magnificent Village, and will continue to do all I can for the betterment of our community! May God Bless the Village of Bartlett!



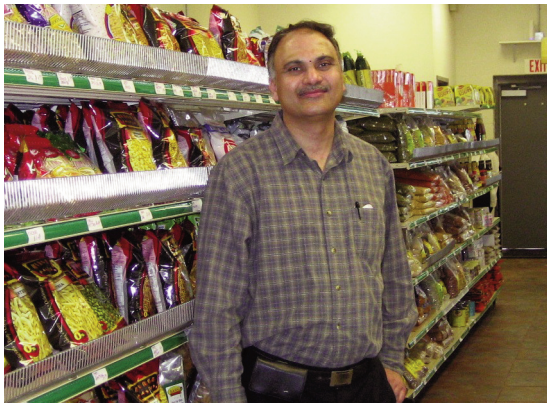
*The Bartletter is printed on recycled paper using soy ink.*



## ZONED FOR BUSINESS

**Siri Indian Grocery** has opened at 947 S. Route 59 in the Apple Valley shopping plaza (near Oberweis Dairy Store). Owner Sunder Nookala provides a full range of Indian food products, including snacks, rice, flours, spices, lentils, frozen ready-to-eat items with and without meat, samosas, naan (flatbread) and numerous desserts, including sugar dumplings.

Open daily from 11 a.m. to 9 p.m. Call 630-398-4831 or visit [www.sirigrocery.com](http://www.sirigrocery.com) for more details.



**Mathnasium - The Math Learning Center** has opened at 974 S. Bartlett Road in the Bartlett Orchards shopping plaza, across the street from Jewel-Osco. Owners Amit Singh and

Anjali Gupta offer math tutoring for grades K-12.

Children will receive personalized instruction and a customized learning plan based on their unique needs and goals. Mathnasium's mission is to help your child catch up, keep up, and then get ahead in math.



Mathnasium is open from 3:30 to 7:30 p.m. Monday through Thursday and on Saturday from 10 a.m. to 1 p.m. It is closed on Friday and Sunday. Call Mathnasium at 630-830-MATH (6284) or visit [www.mathnasium.com/bartlett](http://www.mathnasium.com/bartlett) and the company's Facebook page.

Remember that you can keep up with local business-related news, events and photos on the Discover Bartlett page on Facebook.

## Senior Utility Tax Rebate

In March, the Village began mailing utility tax rebate applications to residents who receive a senior discount on their water bills. The senior utility tax rebate application is also available at Village Hall and on the Village website ([www.village.bartlett.il.us](http://www.village.bartlett.il.us)). To be eligible for the rebate, residents must show that they are 65 or older, have been a resident since May 1, 2012, and hold a natural gas or electricity account in their name.

To apply, submit a completed application, proof of age (waived if you currently receive a senior water bill discount) and a copy of an April 2013 natural gas or electricity bill. If you pay for natural gas or electricity through rent or a homeowners association fee you will need additional documentation, such as a rental agreement or letter from your homeowner's association to apply. Rebate applications must be delivered to the Village Hall Main Office, put in the parking lot drop box or, if mailed, postmarked no later than June 5, 2013. If mailing, address to: Village of Bartlett, Utility Tax Rebate, 228 S. Main St., Bartlett, IL 60103. Please contact Main Office, 630-837-0800 with any questions.

### Garbage Toters to be Delivered April 8 - April 19

Allied Waste/Republic Services will deliver a free garbage toter to every residence with curbside collection, Monday thru Friday, over a two-week period. You can still put garbage that does not fit in the toter at the curb at no additional charge. You have 120 days to exchange the garbage toter or your current recycling toter for a different size for free, after which a \$20 exchange fee will apply. For more information, please call Steven Bosco, 630-837-0800.



photo by Mark Llanuza

**“When you choose your friends,  
don’t be short-changed by choosing  
personality over character.”**  
~ W. Somerset Maugham,  
British playwright, novelist  
and short story writer

**Character Counts! in Bartlett**

## April 2013

SUN	MON	TUES	WED	THURS	FRI	SAT
	1 Brush Pickup - Area A	2 Village Bd 7pm	3	4 ZBA 7:30 pm	5 "Bartlett Visits the Fairs" exhibit at Bartlett Library 4/5 to 4/26	6 Craft at Depot Museum, 9 am to noon
7	8 Brush Pickup - Area B Hist Soc 7pm @Library EDC 7:30 pm	9 Hydrant Flushing April 8 to 18 -- Area 1, north of Stearns Garbage Toters to be Delivered, April 8 - April 19 <b>ELECTION DAY - electricity aggregation on the ballot</b>	10	11 Plan Comm 7:30 pm	12	13 Lupus Health Fair 10am @ Hanover Twp
14 Friends of the Library Mtg 3pm @Library	15 Brush Pickup - Area A	16 Art Reception @ Village Hall Gallery, 5:30pm Village Bd 7pm	17	18	19 Meet Me at the Fair, 6:30pm @library	20 Coffee w/Bd 9am Village @Earth Day Event, (see page 2 & 4)
21 Woman's Club Fashion Show & Luncheon, noon at Villa Olivia	22 Brush Pickup - Area B	23	24	25	26	27 Parks Cleanup (see page 10) Prescription Drug Dropoff @Village Hall 9 am to noon
28	29	30	<p><b>Did You Know?</b></p> <p>...the Village will resurface approximately 30 street miles this year. Patching &amp; resurfacing will take place throughout Bartlett, beginning in April or May, extending through October. Please contact Public Works, 630-837-0811, with questions. Check the Village website &amp; Bartletter for updates.</p>			



photo by Laurie Ruhlin

**“Conscience is less an inner voice than the memory of a mother's glance.”**  
 ~ Robert Brault,  
 American free-lance writer

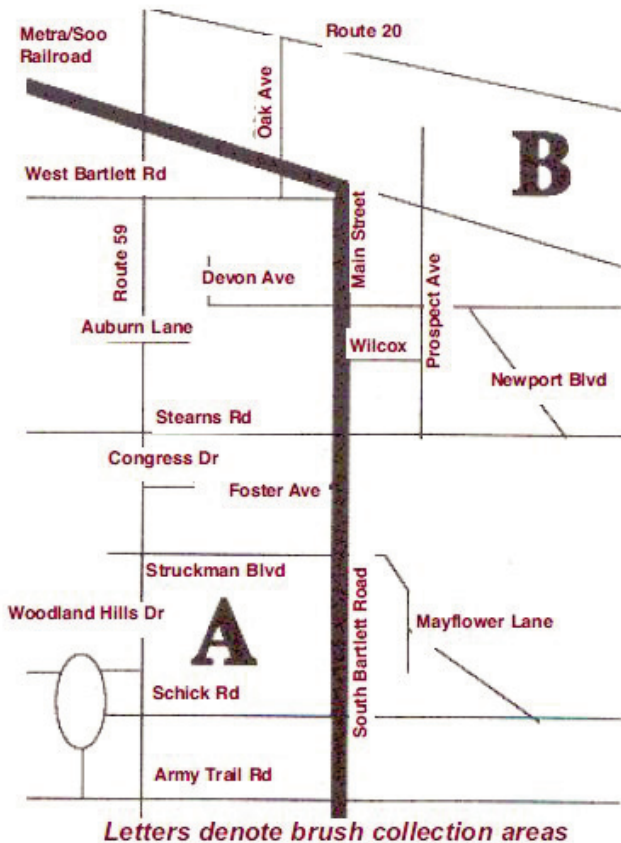
**Character Counts! in Bartlett**

# May 2013

SUN	MON	TUES	WED	THURS	FRI	SAT
			1	2	3	4
			“Bartlett Visits the Fairs” exhibit at Bartlett History Museum beginning 5/1	ZBA 7:30 pm		Craft at Depot 9 am to noon  Plant Sale 9am & Pet Photos 10:30 am @Banbury Fair
5	6	7	8	9	10	11
Plant Sale 10am - 2pm @Banbury Fair  Wonderland Tea, 1:30pm @library	Brush Pickup - Area A	Village Bd 7pm		Plan Comm 7:30 pm	Candy Days for Lupus	
12	13	14	15	16	17	18
<b>MOTHER'S DAY</b>  Brunch @Bartlett Hills 10 am to 2 pm	Brush Pickup - Area B  Hist Soc 7pm @Library  EDC 7:30 pm		Ride of Silence, 6:45 p.m. from Spin Doctor			Coffee w/Bd 9am
19	20	21	22	23	24	25
	Brush Pickup - Area A	Art Reception @ Village Hall Gallery, 5:30pm  Village Bd 7pm			<b>HOLIDAY HOURS</b> Village Hall will be closed Saturday, 5/25 thru Monday, 5/27 for the Memorial Day holiday.	
26	27	28	29	30	31	
	<b>MEMORIAL DAY</b>  Memorial Day Walk, step-off 11 am (pg 12)	Brush Pickup - Area B				



# BRUSH COLLECTION 2013



Letters denote brush collection areas

**Area A -- 1st and 3rd Mondays: Homes located south of the Metra/Soo railroad tracks and west of Main St./S. Bartlett Road.**

April 1 & 15  
 May 6 & 20  
 June 3 & 17  
 July 1 & 15  
 Aug. 5 & 19  
 Sept. 3 (Tues) & 16  
 Oct. 7 & 21  
 Nov. 4 & 18

**Area B -- 2nd and 4th Mondays: Homes located north of the Metra/Soo railroad tracks and east of Main St./S. Bartlett Road.**

April 8 & 22  
 May 13 & 28 (Tues)  
 June 10 & 24  
 July 8 & 22  
 Aug. 12 & 26  
 Sept. 9 & 23  
 Oct. 14 & 28  
 Nov. 11 & 25

The Village of Bartlett chips brush (cut or broken branches) for residents from the beginning of April until the end of November, according to the schedule on the left. Brush pickup is one of the Village's most popular programs, from a resident participation standpoint, and following a few rules ensures speedy collection and safe working conditions for Public Works employees.

Branches should be stacked neatly at the curb, cut ends facing the street, by the Sunday evening before collection. Thorny bushes, logs and stumps must be stacked separately since they can cause injury to Village employees and equipment.

**\* Branch Length - minimum of 2 feet long, maximum of 8 feet long. Must be less than 6 inches in diameter.**

**\* Brush must never be piled higher than 4 feet; this obstructs visibility for pedestrians & vehicles.**

**\* Small sticks and evergreen clippings should be put into yard waste bags.**

There are no call backs if you miss your collection day. Brush should not be left in the parkway between collection dates. The brush removal program is for owners of single family homes performing work themselves, on their own property; private businesses and townhouse owners with associations that do their maintenance are not eligible for brush pickup. In addition, brush generated by tree services, landscape contractors or other services procured by the homeowner are not eligible for this program. The homeowner must arrange for removal of any contractor-generated brush at their own expense.

Brush piles that do not adhere to chipping requirements will be tagged, explaining why the brush was not removed and what steps to take to correct the problem.

Garden debris, such as grass clippings, weeds, leaves, soil, rocks, boxes and bags are not brush and will not be picked up by the Village. This type of garden waste must be placed in the specially marked Republic Services bags and placed alongside your household trash and recyclables for the weekly collection.

If you have any additional questions, please call Public Works at 630-837-0811.

**Know what's below - Call 811 before you dig!  
 It's Smart. It's Free. It's the Law!**

## All Aboard for History

What were the job duties of Bartlett's station agent? How did agents, like Joe Charneskey, get train orders to an engineer? What does each distinct train whistle mean? Come on down and visit the Bartlett Depot Museum, learn the answers for yourself and experience everything firsthand. The museum, located at 100 W. Railroad Avenue, is open for discovery on Tuesday and Thursday from noon to 5 p.m. and the first Saturday of the month from 9 a.m. to noon.

Children and their families are especially welcome on the first Saturday of the month for a free make and take craft opportunity while experiencing the Village's railroad heritage. No registration is necessary, but supplies are limited.

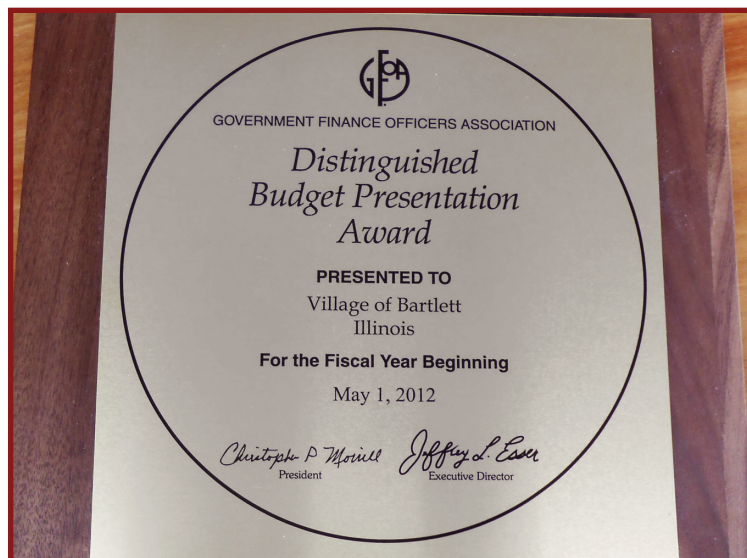
**Saturday, April 6-** April showers bring May flowers.



Come and create your spring flowers early. Kids will make a cupcake (wrapper) flower craft to celebrate the arrival of spring while enjoying a scrumptious real cupcake too. Bring a 2-inch picture if you would like to personalize the flower.

**Saturday, May 4** - Stop by and make a Mother's Day craft

complete with a charming poem. Create and embellish your hand print, creating the perfect Mother's Day gift.



**17th CONSECUTIVE YEAR**

**Bartlett has been recognized with a Distinguished Budget Presentation Award from the Government Finance Officers Association for the 17th consecutive year**

## Discover Yesterday's Bartlett



Girls Scouts, there is still time to tour "Snips, Snaps and Sentiments, A Scrapbook of Bartlett's Scouting Heritage," on exhibit at the Bartlett History Museum. Learn about the Village's scouting endeavors through the decades and enjoy some hands-on activities too. Add your memories to the giant scrapbook!

Scout leaders, did you know the Village of Bartlett Museums can help your scouts fulfill rank and badge requirements in regard to local history? There is no charge for troop tours at the Bartlett History or Bartlett Depot Museum and scouts receive a free patch. To schedule, call Pam Rohleder, 630-837-0800.

## your parks, your EARTH

Come one, come all, come clean up your community! The Village, in cooperation with the Bartlett Park District, will be holding a community park clean-up day on Saturday, April 27 from 9 a.m. to noon.



Residents, civic groups and businesses, are invited to keep the spirit of Earth Day going by helping with this clean-up effort. For more information or to sign up for this event, call Scott Skrycki, 630-837-0800. Bags and gloves will be available through the Village.

# BARTLETT BRIEFS

## UPCOMING LUPUS EVENTS

The **Lupus Foundation** will hold an Educational Health Fair 4/13 from 10 a.m. to noon at the Hanover Township Building. The Lupus Candy Days fundraiser in Bartlett will be on 5/10 & 5/11. The Bartlett area Lupus Support Group meets the last Tuesday of the month at the Hanover Township Building. For more information, contact Maureen, 630-400-8630 or [lupusinbartlett@yahoo.com](mailto:lupusinbartlett@yahoo.com).

## MEET ME AT THE FAIR

This **Bartlett Public Library District Foundation** fundraiser will be on Friday, 4/19 at 6:30 p.m. Visit the two Chicago World's Fairs: the 1893 World's Columbian Exposition and the 1933 Century of Progress. Experience the sights, sounds, and foods of the fairs and receive a commemorative souvenir! Advance tickets required: \$35 per person/\$60 per couple at the Check-Out Desk. Must be 21 years or older to attend. For more information, please call 630-837-2855.

## SCHOLARSHIPS & FASHION

The **Bartlett Woman's Club** annual Spring Fashion Show & Luncheon is at noon on 4/21 at Villa Olivia in Bartlett. Tickets are \$30. Proceeds support the Club's scholarship program. For tickets, call Ruth, 630-837-8125.

## GARDEN CLUB PLANT SALE

The **Tri-Village Garden Club of Bartlett, Hanover Park and Streamwood** will hold its annual Plant Sale on 5/4 from 9 a.m. to 3 p.m. & 5/5 from 10 a.m. to 2 p.m. at Banbury Fair. Large selection of perennials and garden treasures at bargain prices. For information, call Eileen Lucietto 630-289-4253 or visit [www.trivillagegardenclub.org](http://www.trivillagegardenclub.org).

## PET PHOTOS

**Four Paws Animal Foundation** is holding its spring pet photos/bake sale fundraiser on Saturday, 5/4 from 10:30 a.m. to 3:30 p.m. at Banbury Fair. Take home a 5 x7 photo for a \$10 donation. The foundation's annual garage sale/bake sale will be at 215 N. Crest on 6/7 & 6/8 from 9 a.m. to 3 p.m. Donations of household items in good condition accepted. Call 630-289-0478

## TEA IN WONDERLAND

Come down the rabbit hole and join the **Bartlett Public Library District** for a tea party in Lewis Carroll's Wonderland on Sunday, 5/5 at 1:30 p.m. Storyteller Megan Wells will entertain with the magical adventures of a girl named Alice. This is a special event for the young and young at heart! Seating is limited and the registrant must be a Bartlett Library cardholder. Call 630-837-3560 to register.

## RIDE OF SILENCE

The **Ride of Silence**, a memorial bicycle ride for cyclists killed and injured in crashes, will be on 5/15. Meet at **Spin Doctor Cyclewerks** at 6:45 p.m. It is a 10-mile ride at 10mph. Helmets required.

## BUY A MEMORIAL BRICK

Show support of our nation's veterans while leaving a personal, permanent memorial honoring families, organizations, businesses and individuals. Phase 1A of the **Bartlett Veterans Memorial** is closed, but you can still order a brick for Phase 1B. For an order form & prices visit [www.bartlettveterans-memorial.com](http://www.bartlettveterans-memorial.com). If you have any questions, contact Greg Martin at 847-767-3261.

## FREEDOM BASH

The **Hanover Township Freedom Bash** is on Friday, 6/7 from 5 to 11 p.m. at the township campus in Bartlett. More information can be found at [www.freedombash.com](http://www.freedombash.com).

## REUSE & RECYCLE EVENT

**Wayne Township's** free, Reuse/Recycle Event will be held from 9 a.m. to 1 p.m. on 6/8 at 27W031 North Avenue, West Chicago. For more information about what is being collected, please visit [www.waynetwp-il.org](http://www.waynetwp-il.org) or call Cindy, 630-231-7140 with questions.

**Please submit information for the June/July Bartletter to: Gabrielle Infusino, Village Hall, 228 S. Main St., Bartlett, IL 60103 or [ginfusino@vbartlett.org](mailto:ginfusino@vbartlett.org) by Friday, April 26.**



## EXPRESS YOURSELF

**To e-mail a question or comment to any one of the Village departments, please visit our website and click on "Contact Us" on the homepage. You may also contact the Village by regular mail at: Village of Bartlett, 228 S. Main Street, Bartlett, IL 60103**



## Memorial Day Walk

For more than 25 years, Bartlett has been honoring its deceased veterans with a Memorial Day Walk and Remembrance. Please join in on Memorial Day, May 27, for this annual hometown commemoration.

The morning will begin at 10 a.m. at Bartlett Park, Oak and North Avenues, with an American Legion flag retirement ceremony. At 10:30 a.m. veterans, scouts, civic groups and bagpipers will begin lining up for the walk to Bartlett Cemetery, which steps off at 11 a.m. Everyone is invited to join the walk. At the cemetery, the Remembrance continues with a brief program honoring Bartlett's local heroes.

Groups interested in participating in the walk can call Paula Schumacher, 630-837-0800.

## Bartlett Phone Directory

Police Service Number	911
Administrative Number	630-837-0846
TDD Service for Hearing Impaired	
Emergency/Non-emergency	911
Fire Emergency Number	911
Non-Emergency	630-837-3701
Bartlett Village Hall	630-837-0800
Bartlett Public Works	630-837-0811
Bartlett Hills Golf Course	630-837-2741
Bartlett Public Library	630-837-2855
Bartlett Park District	630-540-4800
Bartlett Aquatic Center	630-372-7665
Bartlett Post Office	800-275-8777
Bartlett Chamber of Commerce	630-830-0324
School District U-46	847-888-5000
Hanover Township Assessor's Office	630-837-0301
Wayne Township Assessor's Office	630-231-8900

THE VILLAGE OF  
**BARTLETT**

228 S. MAIN STREET  
BARTLETT, ILLINOIS 60103

PRSRT STD  
ECRWSS  
U.S. Postage  
PAID  
Bartlett, IL  
Permit No. 208

**Michael A. Airdo**, Village President  
**Lorna Giless**, Village Clerk

Trustees  
**T.L. Arends**  
**Patricia Kelly**  
**Gregory A. Martin**  
**Frank Napolitano**  
**Dennis M. Nolan**  
**Eric Shipman**

**Postal Customer, Local**  
**Bartlett, Illinois 60103**

Newsletter Editor  
**Gabrielle Infusino**