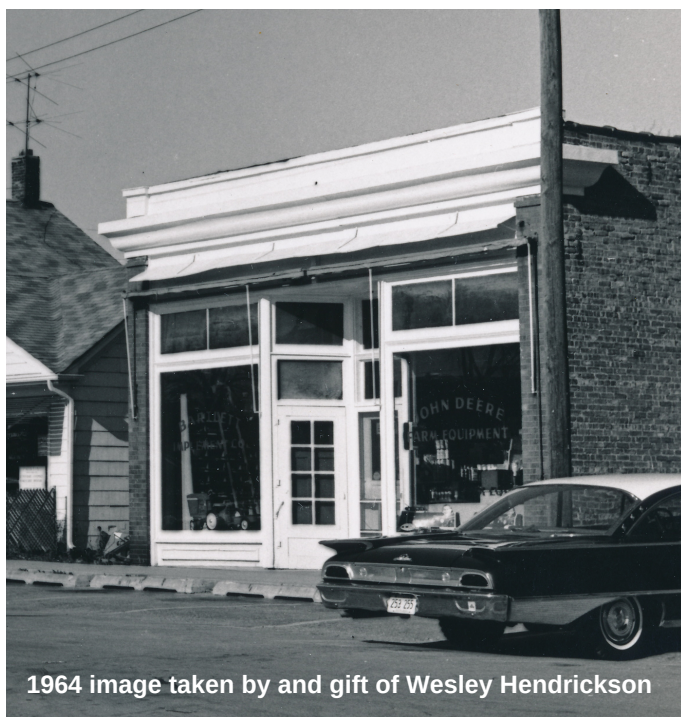




# BARTLETT IMPLEMENT COMPANY

120 W. BARTLETT AVENUE

1941-1971



1964 image taken by and gift of Wesley Hendrickson



### **Far left**

*The Bartlett Implement Company once located at 120 W. Bartlett Avenue.*

### **Left**

*1940s matchbook gift of LaVerne Meyer*

### **Below**

*Grace Krumpfuss Porter Deverell, future company owner and her father Edmund G. Krumpfuss, who was one of the owners of Thurnau & Krumpfuss and initial co-owner of the Bartlett Implement Company.*

Bartlett, established in 1873, was a small rural railroad village that provided transportation and additional services to the farm families surrounding its borders. Dairy and other livestock farms were common along with farms of cultivated crops like corn, hay and wheat. Farm machinery was needed to prepare, plant and harvest. In 1911, Edward D. Thurnau (1881-1941) and Edmund G. Krumpfuss (1881-1950) opened an implement dealership that bore their names on Main Street in Bartlett. Thurnau & Krumpfuss sold, rebuilt and repaired



1942 image gift of Kathy Porter

John Deere tractors and other brands through the years, such as U. S. Goodhue, McCormick, International Harvester and Farmall. Later they added Buick and Chevrolet automobiles and even Maytag washing machines to their inventory. Thurnau & Krumpfuss dissolved their partnership and business in 1941.

The Bartlett Implement Company traces its beginnings to 1941 when it opened for business at 120 W. Bartlett Avenue selling new and refurbished John Deere products, offering repair services and more. The initial proprietors were Edmund G. Krumpfuss and his brother Alvin Krumpfuss (1890–1972).

Newspapers printed advertisements that chronicled auctions and sales the company held but also reported some of its activities, stories and ownership. Art Jahn, a local farmer, took his tractor to the dealership in 1947 to get a new coat of paint. According to the *Cook County Herald*, “It’s a medium green color and really looks nice.”



1942 employees

Left to right, Russ Porter, Vernon Stark, Joe Stark, William Baxmann, Alvin Krumpfuss

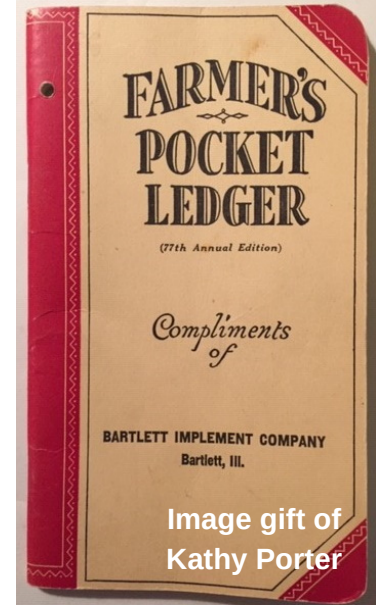


Image gift of Kathy Porter

The Farmer's Pocket Ledger was a free guide produced and distributed by John Deere for its customers. It also promoted Deere products.

In the picture above, taken for a 1943 John Deere company newsletter, Russell Porter (1909-1950), William Baxmann (1901-1955) and Alvin Krumpfuss were titled as the “dealers,” with Vernon Stark and Joe Stark as “service men.” Porter was Ed Krumpfuss’ son-in-law and had worked for him at Thurnau & Krumpfuss, just like Baxmann and Alvin Krumpfuss.

With Porter’s sudden passing in 1950, his share of the business was sold for \$1 to his wife Grace Krumpfuss Porter (1912-1968) who became an owner. In 1954, Porter married Clifford “Cliff” Deverell (1911-1992), a farmer, who joined in the ownership and operations of the dealership.



Early 1940s image gift of Steve Jervey

Laura and Lawrence Thrun with their first tractor purchased from the Bartlett Implement Company.

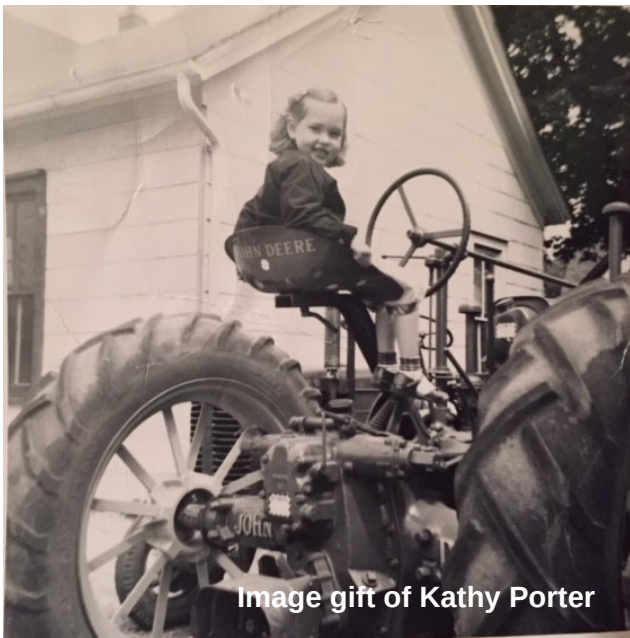


Image gift of Kathy Porter

For Kathy Porter, above, the business was a family affair. Her grandpa Ed, father Russ, mother Grace and stepfather Cliff were all involved in the ownership and operations. Here she is pictured outside the store on Bartlett Avenue in the early 1950s.

When area farmers needed a helping hand, the Bartlett Implement Company was there for them. In 1954, farmer Harry Stark became ill, and his neighbors and friends pitched in and helped with the field work on his farm. The dealership and two of its employees Don and Vernon Stark were there to help.

It wasn't only all work however. In 1962, a Christmas party complete with a gift exchange was held at the new Apple Orchard Country Club for employees and their wives. For John Deere Day, January 3, 1963, the dealership held an event at the then Bartlett Volunteer Fire Department's hall on Main Street to which the public was invited. A few weeks later in February, Deverell traveled by train to Waterloo, Iowa, where he and other dealers were guests of John Deere at its tractor assembly plant.

In 1964, after having worked many years in the parts department, Robert "Bob" Probst became an owner in the dealership with Deverell. Probst tracked more than 20,000 different tractor and farm implement parts for their customers! He began his employment working part time during high school in the early 1950s with delivering machinery to famers and other duties. One thing Probst recalls today is the wooden sidewalk on Bartlett Avenue that ran in front of the dealership.

Other longtime employees included Donald Piegorsch, who was a mechanic, and Gus Ehlers and Russell "Russ" Kinney, who were the company's bookkeepers. Later, Dorothy Buehler was an office worker and Clyde Cassell an assembly mechanic.

**BOB PROBST**, one of the owners of the Bartlett Implement Company for the past three years, has been associated with them for many years in the parts department. Bob keeps track of over 20,000 different tractor and farm implement parts for the customers of their John Deere dealership.

**BARTLETT IMPLEMENT CO.**  
PHONE 837-2601 • BARTLETT

"Bartlett Business Portraits"  
The Township Times, July 26, 1967

- Promotional Writing Implements
- Top- circa 1960 mechanical pencil
- Middle- circa 1968 mechanical pencil
- Gift of Donald Haberkamp
- Bottom- circa 1960 mechanical pencil



In 1965, the Cloverdale Maidens 4-H Club, out of the former community of Cloverdale, Illinois, crafted a float which featured club members balancing on a large globe which was displayed on a new Bartlett Implement Company tractor run by Vernon Stark. But it was Deverell who drove the iconic green and yellow John Deere tractor in the once annual Bartlett Volunteer Fire Department's festival parade. Supportive of community events, the dealership also donated the trophy for the Grand Champion Swine Exhibit for the 1968 North Cook County 4-H Fair.



Image gift of Cindy Phelps

Cliff Deverell, wearing a Deere logo shirt and hat, is riding one of the company's tractors in the 1962 Bartlett Volunteer Fire Department's festival parade.

In addition to carrying tractors and other implements like combines, the business sold parts and lawn and garden tractors and equipment. Children's sized tractors and other Deere toys for sale were displayed in the store's two large windows which faced Bartlett Avenue.

Early auctions were held at the dealership's warehouse, located on the southwest corner of Oneida and Hickory Avenues. The building was originally home to the Congregational Church, Bartlett's first house of worship. A large garage door and ramp on the Hickory Avenue side was added to allow machinery to be driven into the building. Extra stock was stored outside on the property directly behind the former church and also adjacent to the dealership, on the west side. Items on the auction block included John Deere tractors and other machinery like grinders, spreaders, choppers and plows. Lunch was served on the grounds with auctioneers including Gordon Stade and Bill Stade, calling for bids.

**AUCTION**

The Bartlett Implement Co. will sell at their warehouse in Bartlett, Illinois, on

**SAT., APRIL 4**

Commencing At 11:00 A.M.

**BARTLETT IMPLEMENT CO., owners**  
**6 TRACTORS**

<p>John Deere Model 4020 Diesel 2 J.D. Model 70 Tractors</p> <p><b>Other Machinery</b></p> <p>GLENER MODEL A COMBINE, 10 FT. &amp; 2 ROW CORN HEAD 2 LETZ PTO GRINDERS HELIX GRINDER-MIXER 10 FT. INTERNATIONAL GRAIN DRILL MASSEY HARRIS 6 FT. MOWER BOUGHTON FERTILIZER SPREADER CUNNINGHAM HAY CONDITIONER ALLIS HAY CONDITIONER FARMHAND UNLOADING BOX J.D. NO. 8 1 ROW CHOPPER IHC 1 ROW CHOPPER NEW HOLLAND 1 ROW CHOPPER WITH ENGINE NEW HOLLAND 1 ROW CHOPPER PTO, LIKE NEW, AND HAY PICKUP 2 J.D. MODEL T4 4 ROW CULTIVATORS 2 J.D. MODEL 400 4 ROW CULTIVATORS J.D. FRONT MOUNTED 6 ROW CULT. J.D. MODEL 494 PLANTER WITH LIQUID FERT. J.D. 488 PLANTER WITH DRY FERT. J.D. MODEL 234 2 ROW CORN HEAD IHC 3x16 PLOW IHC 2x16 PLOW J.D. MODEL 55 3x14 PLOW IHC 4x14 PLOW</p>	<p>2 International Model M Tractors Allis Model WC Tractor</p> <p>2 J.D. MODEL 650 5x14 PLOWS J.D. 2 BOTTOM PLOW OLIVER 6x16 PLOW J.D. 5x16 MODEL F355H HVD. TRIP PLOW ON LAND HITCH AND IN THE FURROW FORD 2 ROW MOUNTED PICKER J.D. MODEL 227 2 ROW MOUNTED PICKER J.D. MODEL 9 CORN PLANTER HITCH OVER DISC J.D. NO. 12 CORN PLANTER HITCH OVER FIELD CULTIVATOR CRANE 3 POINT HITCH 2 J.D. MODEL RW DISCS, 44 &amp; 48 BLADES IHC 10 FT. DISC WITH CYLINDER AND HOSE J.D. MODEL AW 13½ FT. DISC ALLIS 19 FT. FOLDING DISC NEW IDEA HVD. WAGON HOIST J.D. MODEL AW 15 FT. 44 BLADE DISC NEW IDEA 2 ROW CHOPPER HELIX BARG BOX UNLOADER SEARS 30 FT. ELEVATOR MASSEY HARRIS BALER SEVERAL RIDING LAWN MOWERS LOT OF MISCELLANEOUS TOOLS</p>
---	---

**LUNCH WAGON ON GROUNDS**

TERMS: Usual Bank Terms - Make arrangements with clerks.  
Not responsible for accidents. Nothing to be removed until settled for.

**AUCTIONEERS:**  
Gordon Stade - McHenry Illinois  
Bill Stade - Mundelein, Illinois

**CLERKS:**  
H. E. Schnadt and Emil Bartels Auction Service

**Museum acquisition**

Poster advertising an April 4, 1970 auction.



**Gift of Barry O'Brien**

*This unique double compartment shaker holds salt and pepper separately for a two-sided shake. The Deere logo dates it from 1950 to 1956.*



**Circa 1960  
gift of Bill Tiknis**

**Above-** *This handy key chain also contains a 24 inch tape measure.*

**Right-** *1967 image of the store.*

**Below-** *Store sign gift of the Bartlett Implement Company.*

By 1962, the original warehouse was sold and the dealership purchased land at the eastern end of Bartlett Avenue, just a few doors away from the business. A large steel warehouse, made by industrial building designer Butler Manufacturing, was constructed to hold the extra stock, with additional storage outside of it. Promotional giveaways were common and customers enjoyed receiving yardsticks, pens, pencils and unique salt and pepper shakers, bearing the trademark Deere logo of the day.

From the time the Bartlett Implement Company was established, the village continued to evolve and grow in population and size due to the annexation of land. Bartlett's population in 1940 was 608 residents and grew to 3,501 residents by 1970. Farmland was turning into residential subdivisions with names like Apple Orchard and Country Place and the need for farm tractors and implements diminished. On November 23, 1971, the Bartlett Implement Company held its final auction, a going out of business sale. Everything was sold from shop and office equipment to farm machinery, parts, cars and trucks, signaling an end of an era.

