

Bartletter

Bartlett's 29th Annual



The Bartlett Depot Museum is Open!

100 W. Railroad Avenue

Tuesday & Thursday
11 a.m. to 4 p.m.
1st & 3rd Saturday each month
9 a.m. to noon.

What's Inside?

Clean-Up Week.....	2
Take Five with the Trustees.....	3
Arts Festival, This Month in History...4	
Fourth of July Festival.....	5
Improving Bartlett's Wastewater.....	6
Be Storm Ready.....	7
Museum News	8
Community Calendar.....	9 - 10
Water Quality Report.....	11 - 14
Bartlett Briefs.....	15
Village Garage Sale.....	16

JUNE 11 - Dog Walker Watch Summer Social
Sunrise Park (Struckman Blvd), 10 to 11 a.m.

Touch-a-Truck & K.I.S.S. Event - JULY 23
Streets of Bartlett, 8 to 11 a.m.

JULY 29 - Family Fun Night & Twilight Pool Party
Bartlett Community Center
FFN, 5 to 7 p.m. and Pool Party, 7:30 to 9 p.m.

Block Parties & Lighting Competition - JULY 30
Registered Neighborhoods throughout Bartlett

JULY 31 - Putt, Chip & Drive Crime Out Family Golf Event
Bartlett Hills Golf Club, 1 p.m.

AUGUST 2
Picnic in the Park - Bartlett Park, 5 to 8 p.m.



Cleanup Week - June 11 through June 18

Clean Up Inside...



Clean out your basement, closets and drawers, then bring your old eyeglasses, American flags, crayons and textiles to Bartlett Village Hall, 228 S. Main Street. Document shredding will be held at the Bartlett Avenue Metra lot on Saturday, 6/11 only.

Crayons

Monday, 6/13 to Friday, 6/17 from 8:30 a.m. to 4:30 p.m. and Saturday, 6/18 from 9 a.m. to noon

Crayons will be donated to SCARCE, where volunteers peel, sort and melt them to make "super crayons" for children with special needs.

American Flags and Eyeglasses

Monday, 6/13 to Friday, 6/17 from 8:30 a.m. to 4:30 p.m. and Saturday, 6/18 from 9 a.m. to noon

The village will collect worn American flags for proper disposal and used eyewear, which will be given to the Bartlett Lions Club.

Textile Recycling

Monday, 6/13 to Friday, 6/17 from 8:30 a.m. to 4:30 p.m. and Saturday, 6/18 from 9 a.m. to noon

Don't use it? Don't wear it? Don't like it? The village with RewearAble, a clothing recycling program committed to helping people with developmental disabilities, will collect clothing, bedding and other household textiles in any condition. **Acceptable:** Clothing items, including tops, bottoms, socks, outerwear, accessories, paired shoes, suits, swimsuits. Household textiles, including sheets, towels, pillow cases, curtains, blankets. Please remove all hangers and any sharp objects. Ensure all items are in sealed plastic bags.

Document Shredding

Saturday, 6/11 ONLY, from 9 a.m. to noon

The village will host a shredder truck to provide residents the opportunity to discard important documents in a secure manner. This program is for residents only and NOT commercial businesses. This event will be held on Bartlett Avenue near the downtown water tower. This event is being partially funded by DuPage County.

...and Clean Up Outside!

Semi-Annual Brush Collection - No Need to Bundle

Spring Collection:

June 6 to 10: homes west of S. Bartlett and south of the Metra tracks

June 13 to 17: ALL homes east of S. Bartlett plus ALL homes north of the Metra tracks

Fall Collection:

October 3 to 7: homes west of S. Bartlett and south of the Metra tracks

October 10 to 14: ALL homes east of S. Bartlett plus ALL homes north of the Metra tracks

Place all non-bundled brush in the parkway, cut ends facing street, by 7 a.m. on the Monday morning of your area's assigned week. The pickup for your specific block may not occur until later in the week depending on how many households in each area are using this service. Please DO NOT put brush piles under trees, next to fixtures, mailboxes or power poles, etc.



This is a supplemental program. Groot continues to pick up weekly bundled brush.

Take Five with the Trustees

If you stopped by this year's police department open house, the first one since the building's construction and the pandemic restrictions that followed, you got an excellent look at Bartlett's new state-of-the-art facility. Not as visible as the transformation to its physical space, but just as important to the department are the recent changes in police personnel.

During 2021, the department had 11 retirements, including a commander, three sergeants, three officers and four civilian staff members. Although promoting four officers to sergeant and one sergeant to commander addressed the attrition in the supervisory staff, recruiting new officers presented both a challenge and an opportunity for the police department.

The challenge - continuing fallout from the pandemic along with the present-day demands for police reform have left police departments across the country struggling to maintain their workforce.

The opportunity - a chance to further align police recruiting with one of the recommendations in the 21st Century Policing Compliance report. Recommendation 1.8 states that "Law enforcement agencies should strive to create a workforce that contains a broad range of diversity including race, gender, language, life experience, and cultural background to improve understanding and effectiveness in dealing with all communities."

Bartlett Police Department's recruitment team aims to attract only the most qualified candidates, who will provide the highest level of police service to Bartlett residents. At the same time the department makes minority recruitment a priority.

The department's extensive recruiting efforts include on-site visits to schools, such as their recent participation in the WIU Law Enforcement & Justice Administration's Career Fair and the Harper College Law Enforcement Career Fair. The department also uses print media to advertise specifically to the Hispanic community.



These efforts have paid off. As of December 2020, 15% of Bartlett Police Department's sworn officers were African-American, Hispanic or other non-Caucasians. Also, the department currently has a percentage of female officers that is slightly higher than the national average for local police departments in the United States (22% vs 12% nationally).

This includes Officer Maha Ayesh, the first Muslim female police officer in Illinois to wear the hijab, or headscarf, on duty. The department updated its standards of appearance to include the hijab as part of her uniform, when she joined the force in October 2020.

The village board fully supports and takes pride in the great strides our police department has taken to diversify its force to better reflect the demographics of the community and help improve the cultural and linguistic responsiveness of our law enforcement agency.

Raymond H. Deyne

Stephanie Gandsey

Dan Gunsteen

Adam J. Hopkins

Aaron H. Reinke

Renée Suwanski



June 11 & 12, 2022 | 11am - 5pm



Global arts Festival



@Jim Jensen Pavilion
Apple Orchard Park
620 W. Stearns Road

Saturday, June 11

- 11 a.m. World Flags & VIP Welcome
- 11:15 a.m. TBA
- Noon Wisla & Mala Wisla Polish Folk Dancers (Irene Jaro)
- 1 p.m. Devaki Janakiraman's Indian Classical and Folk Dances
- 1:40 p.m. Midwest Hakka Association: Folk and Guzheng music
- 2 p.m. Greg Herriges, Turkish music
- 3:15 p.m. Grupo Folkorico Quetzal, Hanover Park
- 4:30 p.m. Yellow River: Chinese Dance

Sunday, June 12

- 11:15 a.m. Flamenco Expresivo Dance Ensemble
- Noon Weber Irish Dancers
- 1 p.m. Dominican Saxophone Quartet, Int'l Music
- 2 p.m. TBA
- 3 p.m. Chaashni Indian Dance & Bollywood Dance (Monica Kapoor)
- 4 p.m. Lisa's School of Dance

Sound by Lou Marrero

*This schedule is subject to changes.
Visit www.artsinbartlett.org/ for updates*



June 1972 - Bartlett Public Library District

June marks the 50th anniversary of Bartlett Public Library District's official start and the beginning of its vision "of becoming an essential place in community life" and mission "to be the Best Place to Learn & Discover."

1968 - several community organizations form the Bartlett Volunteer Library Association & set up a library in the municipal building, 228 S. Main Street
1972 - residents vote to establish a library district
1973 - The Bartlett Public Library District opens in the village hall, 228 S. Main Street
1974 - Ruth Stuenkel is selected as library director
1975 - old post office building at 301 W. Railroad Avenue is purchased to expand library space to 3,100 square feet
1981 - land is purchased at 800 S. Bartlett Road, the current library site
1983 - new 7,100-square-foot building opens in August; Friends of the Bartlett Library is formed by a

group of residents.
1988 - construction is completed on a 4,500-square-foot addition, which opens in February
1994-1995 - a two-story 22,000-square-foot addition is added
2000 - The Bartlett Public Library District Foundation is established
2008-2009 - library undergoes a complete remodel
2009 - the online catalog is updated and the library introduces downloadable materials
2011 - circulation department is expanded
2012 - current library director Karolyn Nance selected
2015 - a renovation creates additional study rooms, conference rooms and an art room.

Fourth of July Festival, July 1 to July 4

The all-volunteer Bartlett Fourth of July Committee invites you to celebrate at Apple Orchard Park, at the corner of Stearns & S. Bartlett roads. The Bartlett 4th of July Festival includes a carnival with rides and games, food, beverages, FREE entertainment for all ages, a turtle race, a parade, onsite presence for non-profit groups, fireworks and a great sense of community pride.

There is no charge to enjoy the Bartlett festival. The festival, including bands and fireworks, is funded through the carnival, food and beverage purchases. Please help fund the event by purchasing.

Friday, July 1

2 - 4 p.m.

Special Needs Carnival Time - register for FREE tickets at

www.eventbrite.com/e/bartlett-4th-of-july-special-needs-carnival-tickets-335430219817

5 - 7 p.m.

SMOKIN' GUNZ

7:30 - 8:30 p.m.

SERENTIPITY CHICAGO

9 - 11 p.m.

7TH HEAVEN

Saturday, July 2

noon - 1:30 p.m.

SAM SAVAGE

2 - 3:30 p.m.

PRAIRIE STATION

4 - 5:30 p.m.

THE STINGRAYS

6 - 8 p.m.

RON BURGUNDYS

8:30 - 11 p.m.

LIBIDO FUNK CIRCUS

Sunday, July 3

1 p.m.

Bartlett Lions Club Parade

3 - 4 p.m.

THE USUAL SUSPECTS

4:30 - 6 p.m.

METRO FERN

6:30 - 8:30 p.m.

BELVIDERES

9 - 11 p.m.

HIGH-INFIDELITY

Monday, July 4

noon - 1:30 p.m.

PEACH'S BEACH PARTY

2 - 3:30 p.m.

AnuELUSION

4 - 5:30 p.m.

RICK LINDY

6- 8 p.m.

VOYAGE

8:30 - 11 p.m.

ANTHEM

9:30 p.m.

Fireworks Extravaganza

The fireworks are scheduled to start at 9:30 p.m. and finish at approximately 10 p.m.

This schedule is subject to changes. Visit www.bartlett4thofjuly.com for updates

No pets are allowed on the festival grounds.

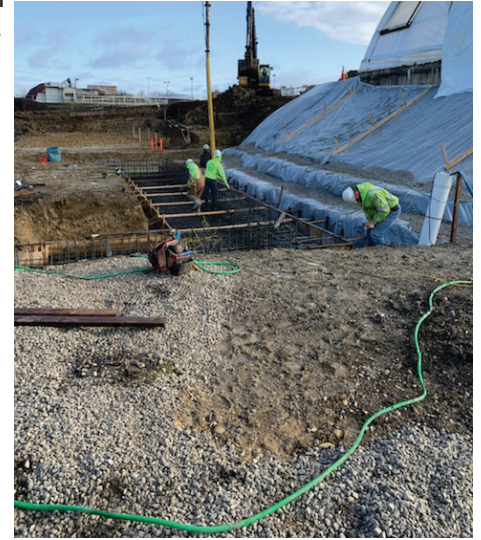
The Bartlett 4th of July Committee is always looking for volunteers to help with the festival. You can attend one of the monthly meetings to learn more about how you can be part of the event. Meetings are held on the second Monday of the month at 7 p.m. at the Bartlett Community Center September through July. (No meetings in December or August).

Improving Bartlett's Wastewater System

The Bittersweet Wastewater Treatment Plant (WWTP) rehabilitation is a multi-year project that will improve water quality for residents and businesses by improving the treatment processes to meet the discharge limits set by the Illinois Environmental Protection Agency (IEPA), including the new limit for phosphorus.

The project includes:

- new preliminary treatment building
- influent splitter structure
- primary clarifier equipment replacement
- new primary sludge pumping building
- primary effluent splitter structure
- improvements to the existing aeration tanks
- installation of new aeration tank blowers in the control building
- final clarifier equipment replacement
- new mixed liquor splitter structure
- replacement of return activated sludge (RAS) pumps
- new scum pump along with other modifications to the existing RAS/WAS pumping building
- new RAS/WAS splitter valve vault
- new tertiary filter building
- new ultraviolet light disinfection structure
- new excess flow splitter structure
- modifications to the excess flow first flush tanks
- modifications to excess flow clarifiers
- modifications to the existing aerobic digesters
- new aerobic digester blower building
- modifications to the existing biosolids dewatering building
- chemical phosphorus removal building
- miscellaneous yard piping, electrical, controls, heaters and ventilating, site modifications and demolition.



These WWTP improvements are financed by the Water Pollution Control Loan Program (WPCLP). The WPCLP is administered by the IEPA and receives a portion of its money to fund these types of projects from the U.S. Environmental Protection Agency. The \$37 million loan has an interest rate of 0.91% and will be repaid over 20 years.

State revolving fund (SRF) programs operate in each state to provide communities the resources necessary to build, maintain and improve infrastructure that protects one of our most valuable resources: water.

Did You Know?

...the Village of Bartlett participates in the National Flood Insurance Program (NFIP) and has adopted flood hazard area protection standards. As a public service, the planning & development services (PDS) department will provide the following information upon request:

1. Basic flood map information
 - a. Special Flood Hazard Areas (SFHA)
 - b. Flood zone, base elevation and panel reference information from the Flood Insurance Rate Map (FIRM)
 2. Floodway locations and regulatory requirements for development in a floodway
 3. Wetland and open space information and regulations that may prohibit development in these areas.
- To request flood map information, please contact the PDS department at 630-540-5920.



Be Storm Ready!

Summer brings warm temperatures and the potential for severe weather. Residents are reminded to take the possibility of severe weather seriously and prepare ahead of time. Here are some tips for weathering any summer storm.

KNOW SEVERE WEATHER TERMINOLOGY

- **Tornado or Severe Thunderstorm Watch:** Conditions are right for a serious storm or tornado to develop. Watch for danger signs and be ready to seek shelter quickly. Stay tuned to the radio or TV for National Weather Service bulletins.
- **Severe Thunderstorm Warning:** Severe weather has been reported by spotters or indicated by radar. Warnings indicate imminent danger to life and property to those in the storm's path.
- **Tornado Warning:** A tornado has been sighted or indicated by radar. Warning sirens will be sounded and you should find shelter immediately.

BEFORE A STORM

- Purchase a National Oceanic and Atmospheric Administration (NOAA) Weather Radio with a battery backup and tone-alert feature. It automatically alerts you when a watch or warning is issued.
- The National Weather Service uses county names in its advisories, so know the county where you live and work.
- Check the weather forecast before going outdoors and postpone plans if storms are imminent.
- Keep a list of emergency phone numbers. Teach children how and when to call 911.
- Choose a friend or relative who lives out of the area that separated family members can call to report their whereabouts and condition.
- Keep important documents and records in a safe deposit box or other secure location.
- Maintain a disaster supply kit.

DURING A STORM

- Close all windows & doors. Draw shades or blinds to reduce the risk from flying glass.
- Try not to use the phone or other electrical appliances.
- Turn off air conditioners. If lightning strikes, a power surge could damage the compressor.
- Delay taking baths/showers.
- If outdoors, seek shelter immediately. If you can hear thunder, there is lightning nearby.
- If you are in a boat, try to reach shore quickly.
- If you are driving, pull to the shoulder away from trees and power lines. Lightning can flash from trees or power poles into a vehicle through the radio antenna. Normally, in the open, a vehicle is a safe shelter from lightning.
- Avoid touching metal parts of the vehicle when lightning is nearby.
- If you find yourself where there is no immediate shelter, find a spot away from trees and power poles and squat low to make yourself the smallest target possible.

AFTER A STORM

- Check for injured persons and render first aid. CPR will revive most lightning strike victims. Do not move anyone who is severely injured unless absolutely necessary. Wait for emergency assistance to arrive.
- Photograph or videotape damage to property.
- Do not make unnecessary telephone calls.
- If driving, be alert for hazards on the roadway.
- Check on neighbors or relatives who may need special assistance.

Warning Sirens

Bartlett is equipped with several warning sirens to notify you of a weather emergency. Sirens are tested at 10 a.m. on the first Tuesday of each month. Other than testing, the signals are sounded only if a tornado warning is issued. If you hear the siren, take cover immediately; turn on a radio or TV for more information.

As a Storm Ready Community, Bartlett reminds you that the weather sirens will NEVER be used to signal that conditions are safe. It is up to you to decide when it is safe to leave places of shelter.

A Penny Saved



Children and their families are invited to celebrate more than a century of banking in Bartlett. Learn about Bartlett's first bank, enjoy storytime and decorate a piggy bank to take home.

This free, one and a half hour program begins at 10 a.m. at the Bartlett History Museum, 228 S. Main Street. It ends with a short walk to the location of Bartlett's first bank, 200 W. Bartlett Avenue, now Associated Bank.

Registration required. Please email your name, number of children, phone number and choice of date, 6/15 or 8/3, to prohleder@bartlettill.gov.



Drop in at Bartlett Village Hall, 228 S. Main Street, anytime between noon and 3 p.m. on Monday, 7/18 to take a trip through Tammy Town. Sgt. Tammy Schulz, who has 29 years of law enforcement experience, has geared this miniature training town to better prepare children for encounters with strangers, weather related incidents and medical emergencies. This free program does not require registration.

Pre-Civil War Quilts:

The Secret Codes to Freedom on the Underground Railroad

Did you know quilts were used by abolitionists and fugitive enslaved people to signify escape routes to the North? Using music, song, images, storytelling and 18 hand-crafted replica quilts, historical researcher Connie Martin presents "Pre-Civil War Quilts: The Secret Codes to Freedom on the Underground Railroad."

Martin mesmerizes audiences as she tells the history of the Underground Railroad, safe routes and the stories of the quilt codes that have been passed down to her, a sixth-generation descendant of captured African people forced into slavery in America.



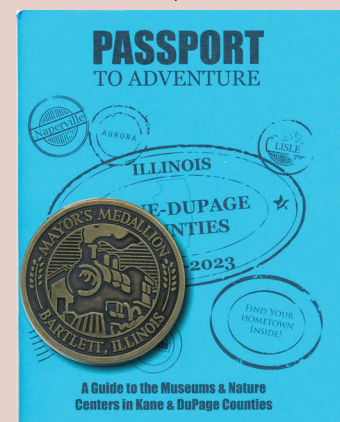
Join the Bartlett History Museum, 228 S. Main Street, on Wednesday, 6/22, for this free program. Doors open at 6:30 p.m. for refreshments and a pre-program presentation that will highlight Bartlett's first doctor and abolitionist Elias C. Guild. Martin's presentation begins at 7 p.m. Space is limited and registration is required. Please email the number attending and your phone number to prohleder@bartlettill.gov.

Passport to Adventure Returns!

After a two-year hiatus due to Covid-19, the Kane-DuPage Regional Museum Association's Passport to Adventure program is back! The program, open to all ages, encourages you to discover and visit 60 museums and nature centers in Kane and DuPage Counties from May 2022 through April 2023.

Free passports are available for pickup at the Bartlett History Museum, 228 S. Main Street; Bartlett Depot Museum, 100 W. Railroad Avenue; Bartlett Nature Center, 2054 W. Stearns Road; and Arts in Bartlett, 215 S. Main Street. The passport lists participating sites and includes locations, hours of operation, admission fees, if any, and more.

The Bartlett resident who visits the most sites by 8/31/2022 will be recognized with the Mayor's Medallion at a village board meeting. For consideration, you must register your total site count by presenting your stamped passport at Bartlett Village Hall by 9/17/2022.





June 2022

“Lately all my friends are worried they’re turning into their fathers. I’m worried I’m not.”

~ Dan Zevin,
prize-winning humorist

SUN	MON	TUES	WED	THURS	FRI	SAT
			1	2 Planning & Zoning Commission 7 pm	3	4
5	6	7 Village Bd 7pm	8	9	10 Relay for Live Lake Park H.S. 6pm - midnight	11 NNO Dog Walker Social 10 - 11 am Global Arts Fest @Jensen Pavilion 11 am - 5 pm
12 Global Arts Fest @Jensen Pavilion 11 am - 5 pm	13 EDC 7 pm	14	15 Penny Saved 10 am @Museum	16	17	18
Clean Up Week, June 11 to 18 -- See Pg 2 for details						
19 FATHER’S DAY	20	21 Village Bd 7pm	22 Quilt Codes 6:30 pm @Museum	23	24 Flick & Float 7:30 pm @aquatic center	25 Car Show, 10 am - 2 pm Drug Drop-off @Village Hall, 9 am to noon
26	27	28	29	30 Bike & Run Committee 3pm		

July 2022

“My dream is of a place and a time where America will once again be seen as the last best hope of earth.”

~ Abraham Lincoln



SUN	MON	TUES	WED	THURS	FRI	SAT
					1	2
			4th of July Festival - July 1 to July 4, see pg 5			
3	4 INDEPENDENCE DAY - Village Hall is closed	5 Village Bd 7pm	6	7 Planning & Zoning Commission 7 pm	8	9 Fly Your Kite @Nature Ridge Park 10 - 11 a.m.
10	11 EDC 7 pm	12	13	14	15	16
17	18 Tammy Town noon - 3 pm @Museum	19 Village Bd 7pm	20	21	22	23 Touch-a-Truck & K.I.S.S. 8 - 11 am Camping 101 2pm, Zoom
24	25	26	27	28 Belvederes Concert, 7pm @library	29	30
31					National Night Out 2022 July 29 to August 2, see pg 1	
						Drug Drop-off @Village Hall, 9 am to noon

VILLAGE OF BARTLETT

2021 Annual Water-Quality Report

By law the Village of Bartlett must provide information to its residents regarding water quality. This is an annual report on the quality of water delivered in 2021 by the Village of Bartlett. The data is from 2021 unless otherwise noted. This report meets the federal Safe Drinking Water Act (SDWA) requirements for “Consumer Confidence Reports” and contains information on the source of Bartlett’s water, its constituents and the health risks associated with any contaminants. Safe water is vital to the community, and the village tests and monitors its water quality on a continual basis. Please read this report carefully. If you have questions or would like information about the next opportunity for public participation in decisions about Bartlett’s drinking water, call the number listed at the end of this report, on page 14

The Village of Bartlett’s drinking water meets or surpasses all federal and state drinking water standards.

OVERVIEW

In 2021 the village water system pumped 1,142,996,000 gallons to its consumers. Village treatment processes have changed since switching to Lake Michigan water in May 2019. Since the switch, the village only boosts chlorine at its facility. Bartlett’s water is tested continuously by certified laboratories to ensure it meets drinking water standards set by the Illinois Environmental Protection Agency.

WATER SOURCE

In 2021, all of Bartlett’s water came from Lake Michigan, pumped here from Chicago through the DuPage Water Commission (DWC) system. Bartlett still has active wells that are utilized only in the event of an emergency.

The Illinois EPA has completed Source-Water Assessment for Bartlett and Chicago water sources. It has determined that Bartlett’s source water is not susceptible to contamination. Chicago uses a surface water source, which the Illinois EPA considers susceptible to potential pollution problems. Therefore, Chicago uses the mandatory treatment processes of coagulation, flocculation, sedimentation, filtration and disinfection. Detailed copies of these assessments are available by calling water supervisor Blake Grenlie, Village of Bartlett Public Works, 630-837-0811. For more detailed information on Chicago water, please visit the City of Chicago Water Department Consumer Confidence Report (CCR) website at www.chicago.gov/city/en/depts/water/supp_info/Consumer_ConfidenceReports.html.

AN EXPLANATION OF THE WATER-QUALITY DATA TABLE

The tables show the results of Bartlett’s and Chicago’s water-quality analyses. The data presented in this report is from the most recent testing done in accordance with regulations. Every regulated contaminant that the village detects in the water, even in the most minute traces, is listed here. The table contains the name of each substance, the highest level allowed by regulation (MCL), the ideal goals for public health, the amount detected, the usual sources of such contamination, footnotes explaining Bartlett’s findings and a key to units of measurement.

The definitions of MCL and MCLG are important.

Maximum Contaminant Level or MCL: The highest level of a contaminant that is allowed in drinking water. MCLs are set as close to the MCLGs as feasible, using the best available treatment technology.

Maximum Contaminant Level Goal or MCLG: The level of a contaminant in drinking water below which there is no known or expected risk to health. MCLGs allow for a margin of safety.

Action Level or AL: The concentration of contaminant which, if exceeded, triggers treatment or other requirement that a water system must follow.

Treatment Technique or TT: A required process intended to reduce the level of a contaminant in drinking water.

KEY TO TABLE

NTU = Nephelometric Turbidity Units

mrem/year = millirems per year (a measure of radiation absorbed by the body)

pCi/L = picocuries per liter (a measure of radioactivity)

ppm = parts per million or milligrams per liter (mg/l)

ppb = parts per billion or micrograms per liter (ug/l)

DuPage Water Commission/Chicago Water

SUBSTANCE	DATE TESTED	UNIT	MCL	MCLG	HIGHEST DETECTED LEVEL	RANGE OF DETECTED LEVELS	MAJOR SOURCES	VIOLATION
-----------	-------------	------	-----	------	------------------------	--------------------------	---------------	-----------

MICROBIAL SUBSTANCES

Turbidity (NTU LOWEST MONTHLY %<0.3 NTU)	2021	NTU	TT (LIMIT 95%<0.3 NTU)	n/a	LOWEST MONTHLY %: 100%	100% - 100%	Soil Runoff	NO
Turbidity (NTU HIGHEST SINGLE MEASUREMENT)	2021	NTU	TT (LIMIT 1NTU)	n/a	0.20	n/a	Soil Runoff	NO

INORGANIC SUBSTANCES

Barium	2021	ppm	2	2	0.0203	0.0200 - 0.0203	Discharge of drilling wastes; discharge from metal refineries; erosion of natural deposits	NO
Fluoride	2021	ppm	4	4	.77	0.65 - .77	Erosion of natural deposits; water additive which promotes strong teeth; discharge from fertilizer & aluminum factories	NO
Sodium	2021	ppm	n/a	n/a	9.99	9.79 - 9.99	Erosion of naturally occurring deposits; used as a water softener	NO
Nitrate	2021	ppm	10	10	0.28	.028 - 0.28	Runoff from fertilizer; leaching from septic tanks; erosion of natural deposits	NO
TOTAL Nitrate/Nitrite	2021	ppm	10	10	0.28	.028 - 0.28	Runoff from fertilizer; leaching from septic tanks; erosion of natural deposits	NO
Coliform	2021		0 POSITIVE MONTHLY	0	0	0 TOTAL # POSITIVE COLI/FECAL COLIFORM SAMPLES	Naturally occurring	NO
Sulfate	2021	ppm	n/a	n/a	27.4	26.9 - 27.4	Erosion of naturally occurring elements	

DISINFECTION BY-PRODUCTS

TTHMS (Total Trihalomethanes)	2021	ppb	80	n/a	28.0	21.1 - 28.0	By-product of drinking water chlorination	NO
Total Haloacetic Acids (HAA5)	2021	ppb	60	n/a	19.9	14.2 - 19.9	By-product of drinking water chlorination	NO
Chlorine	4/17/21	ppm	4	4	1.50	0.91 - 1.50	Water additive used to control microbes	NO

RADIOACTIVE SUBSTANCES

Combined Radium (226/228)	2/4/20	pCi/L	5	0	.95	.83 - .95	Erosion of natural deposits	NO
Gross Alpha (EXCLUDING RADON & URANIUM)	2/4/20	pCi/L	15	0	3.1	2.8 - 3.1	Erosion of natural deposits	NO

Bartlett Water*

SUBSTANCE	MAXIMUM CONTAMINANT LEVEL GOAL	TOTAL COLIFORM MAXIMUM CONTAMINANT LEVEL	HIGHEST # OF POSITIVE	FECAL COLIFORM OR E.COLI MAXIMUM CONTAMINANT LEVEL	TOTAL # OF POSITIVE E.COLI OR FECAL SAMPLES	LIKELY SOURCE OF CONTAMINATION	VIOLATION
COLIFORM BACTERIA							
Coliform Bacteria	0	5% of Monthly Samples	1.9	.	0	Naturally present in the environment	NO

SUBSTANCE	DATE SAMPLED	UNIT	ACTION LEVEL	MCLG	90TH PERCENTILE	# OF SITES OVER ACTION LEVEL	LIKELY SOURCE OF CONTAMINATION	VIOLATION
LEAD AND COPPER								
Copper	2021	ppm	1.3	1.3	0.267	0	Corrosion of household plumbing systems; erosion of natural deposits; leaching from wood preservatives	NO
Lead	2021	ppb	15	0	14.5	5	Corrosion of household plumbing systems; erosion of natural deposits	NO

SUBSTANCE	DATE	UNITS	MCL	MCLG	HIGHEST LEVEL DETECTED	RANGE OF DETECTED LEVELS	LIKELY SOURCE OF CONTAMINATION	VIOLATION
DISINFECTANTS/DISINFECTION BY-PRODUCTS								
Total Trihalomethanes (TTHM)	2021	ppb	80	No goal for the total	43	26.2 - 63.6	By-product of drinking water chlorination	NO
Haloacetic Acids (HAA5)	2021	ppb	60	No goal for the total	22	13.2 - 26.1	By-product of drinking water chlorination	NO
Chlorine	12/31/21	ppm	4	4	1.2	.99 - 1.5	Water additive used to control microbes	NO

*Emergency backup wells. More information available upon request

Water-Quality Table Footnotes

Turbidity: Turbidity is a measure of the cloudiness of the water. It is a good indicator of water quality and the effectiveness of the filtration system and disinfectants.

Iron: Iron is not federally regulated. The state has set an MCL of 1000 ppb. Excessive iron levels may cause staining of laundry and plumbing fixtures, but is not a health hazard.

Sodium: There is no state or federal MCL for sodium. Monitoring is required to provide information to consumers and health officials that are concerned about sodium intake due to dietary precautions. If the level is greater than 20 ppm and you are on a sodium restricted diet, you should consult a physician.
Some substances are not required to be sampled annually.
In most cases the highest detected level is an average, and in some cases it is rounded up.

*MCL Statement: The maximum contaminant level (MCL) for TTHM and HAAS is 80 ppm and 60 ppm respectively and is currently only applicable to surface water supplies that serve 10,000 or more people. These MCLs became effective 01/01/2004 for supplies and surface supplies serving fewer than 10,000 people. Until 01/01/2004, surface water supplies serving fewer than 10,000 people, any size water supply that purchases from a surface water source, and groundwater supplies serving more than 10,000 were under a state imposed TTHM MCL of 100 ppm. Some people who drink water containing trihalomethanes in excess of the MCL over many years experience problems with their livers, kidneys or central nervous systems and may have an increased risk of getting cancer.



The Bartletter is printed on partially recycled paper using soy ink.

ADDITIONAL HEALTH INFORMATION

To ensure that tap water is safe to drink, the USEPA prescribes limits on the amount of certain contaminants in water provided by public water systems. FDA regulations establish limits for contaminants in bottled water. Drinking water, including bottled water, may reasonably expect to contain at least small amounts of some contaminants. The presence of contaminants does not necessarily indicate that water poses a health risk. More information about contaminants and potential health effects can be obtained by calling the Environmental Protection Agency's Safe Drinking Water Hotline (800-426-4791).

Sources of drinking water (both tap & bottled water) include rivers, lakes, streams, ponds, reservoirs, springs and wells. As water travels over the surface of land or through the ground, it dissolves naturally occurring minerals and radioactive material and can pick up substances resulting from the presence of animals or human activity. Contaminants that may be present in source water include:

(A) Microbial contaminants, such as viruses and bacteria, which may come from sewage treatment plants, septic systems, agricultural livestock operations and wildlife.

(B) Inorganic contaminants, such as salts and metals, which can be naturally occurring or result from urban storm runoff, industrial or domestic wastewater discharges, oil and gas production, mining or farming.

(C) Pesticides and herbicides, which may come from a variety of sources, such as agriculture, stormwater runoff and residential uses.

(D) Organic chemical contaminants, including synthetic and volatile organics, which are by-products of industrial processes and petroleum production, and can also come from gas stations, urban stormwater runoff and septic systems.

(E) Radioactive contaminants, which can be naturally occurring or be the result of oil and gas production and mining activities.

In order to ensure that tap water is safe to drink, the USEPA prescribes regulations which limit the amount of certain contaminants in water provided by public water systems. FDA regulations establish limits for contaminants in bottled water, which must provide the same protection for public health. Some people may be more vulnerable to contaminants in drinking water than is the general population. Immuno-compromised persons, such as persons with cancer undergoing chemotherapy, persons who have undergone organ transplants, people with HIV/AIDS or other immune system disorders, some elderly, and infants can be particularly at risk from infections. These people should seek advice from their health care providers about drinking water. EPA/CDC guidelines on appropriate means to lessen the risk of infection by *Cryptosporidium* are available from the Safe Drinking Water Hotline (800-426-4791).

CONCERNING LEAD TESTING

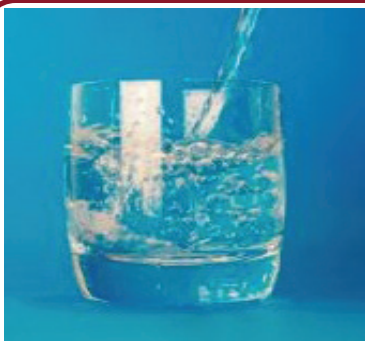
If present, elevated levels of lead can cause serious health problems, especially for pregnant women and young children. Lead in drinking water is primarily from materials and components associated with service lines and home plumbing. Bartlett is responsible for providing high quality drinking water, but cannot control the variety of materials used in plumbing components. If water hasn't been used for several hours, run your tap for at least 3 minutes until it becomes cold to help flush the water pipes.

The City of Chicago adds a corrosion inhibitor to its water, including the water it provides to the DuPage Water Commission. The corrosion inhibitor forms a protective coating on the interior of lead pipes and soldered joints, which prevents the lead from leaching into tap water. If you are concerned about lead in your water, you may wish to have your water tested.

Information on lead in drinking water, testing methods and steps you can take to minimize exposure is available from the Safe Drinking Water Hotline (800-426-4791), at www.epa.gov/safewater/lead and on the Village website, www.bartlett.il.gov/government/public-works/water-division/bartlett-s-drinking-water.

OTHER MONITORING

In addition to the testing Bartlett is required to perform, the village water system voluntarily tests for many additional substances and microscopic organisms to make certain its water is safe and of high quality. If you are interested in a more detailed report or have any additional questions, please contact Water Supervisor Blake Grenlie, Village of Bartlett Public Works, 630-837-0811.



FUN FACTS

- *Lake Michigan is the only Great Lake that is entirely contained in the United States. It is the second largest Great Lake by volume with 1,180 cubic miles of water and the third largest by area.*
- *Bartlett has been using surface water from Lake Michigan since 2019.*
- *Bartlett has six million gallons of storage capacity.*
- *Bartlett has 2,417 fire hydrants.*
- *Bartlett has 200.5 miles of water main.*
- *Bartlett's highest single day water use was on 6/10/21 at 4,664,000 gallons.*

BARTLETT BRIEFS

RELAY FOR LIFE

Want to get involved in the mission of the American Cancer Society? Join the **Relay For Life of Northwest DuPage and Northwest Cook Counties**, scheduled this year for Friday, 6/10 at Lake Park High School East Campus, 600 S. Medinah Road, Roselle. Opening ceremony is at 6 p.m. and closing ceremony is at midnight. During Relay for Life, you will celebrate people touched by cancer, remember loved ones lost and take action for lifesaving change while walking around the track, enjoying inspirational speakers, entertainment, music, games, food and fun. For info and to sign up online, www.RelayForLife.org/NWdupage/IL. Survivors, including current cancer patients and caregivers, should also register. You can sign up as an individual, start a team or join an existing team. Questions? Contact Kiyoko Czech, 630-586-6945 or kiyoko.czech@cancer.org.

CAR SHOW

You are invited to **The Oaks at Bartlett's** 1st annual Classic Car Show on Saturday, 6/25 from 10 a.m. to 2 p.m. Location: 825 Carillon Drive. The show will feature a variety of cars, from classic cars to muscle cars to exotic cars, as well as food booths, giveaways and lots of fun for the whole family. Admission is free! For more information, please call 630-483-4971.

SAVE THE DATE FOR THESE BARTLETT PARK DISTRICT EVENTS

Friday, 6/24, 7:30 p.m.
Flick & Float @Bartlett Aquatic Center

For this event only, bring your favorite pool float to Bartlett Aquatic Center, while you watch a family friendly movie. Movie begins at dark. In case of inclement weather, this will relocate inside to Splash Central.

Saturday, 7/9, 10 to 11 a.m.
Fly Your Kite

@Nature Ridge Park, 1905 Westridge Boulevard
Bring your kite to Nature Ridge Park and help celebrate Unplug Illinois. Fly on your own or participate in a kite-flying contest. The categories may include the biggest kite, smallest kite, highest-flying kite, most unusual kite, and others. Register onsite for the contests. New this year - first 12 families will receive a free kite to fly and take home (one kite per family).

Thursday, 7/28, 7 p.m.
The Belvederes - Free Concert @Bartlett Public Library

The Bartlett Park District and the Friends of the Bartlett Library District are partnering to provide an amazing FREE concert series this summer on the north lawn of the Bartlett Public Library, 800 S. Bartlett Road. Pack up the family and a picnic dinner and enjoy the music and entertainment. No registration necessary, picnic baskets, blankets and lawn chairs welcome.

CAMPING 101

There is no better time to get back to nature and try camping. Whether you are camping in, camping out or camping on, ME4E (Multidisciplinary Education for the Environment) has probably tried it. Join this Bartlett Public Library Zoom program at 2 p.m. on Saturday, 7/23 to learn about gear, planning, locations, food and more. This virtual program is packed with helpful hints from ME4E.

LITERACY DUPAGE TUTORS

Literacy DuPage has been helping adults improve their English language skills through tutoring since 1972. Annually, Literacy DuPage's 325 volunteers tutor 360-plus learners, who are primarily immigrants, refugees and low-income adults. The impact of Literacy DuPage's one-to-one English program is a proven, long-term solution for bridging the gap between residents having limited opportunities and thriving in their workplaces and communities. To volunteer to be a tutor or to learn more about the program and how to become involved, visit www.literacydupage.org or call 331-472-7160. No teaching or foreign language experience is required.

Please submit information for the August/September Bartletter to: Gabrielle Infusino, Village Hall, 228 S. Main St., Bartlett, IL 60103 or ginfusino@bartlett.il.gov by Friday, June 24.

THE VILLAGE OF
BARTLETT

228 S. MAIN STREET
BARTLETT, ILLINOIS

PRSR STD
ECRWSS
U.S. Postage
PAID
Bartlett, IL
Permit No. 208

Kevin Wallace, Village President
Lorna Giles, Village Clerk

Trustees

Raymond H. Deyne
Stephanie Gandsey
Dan Gunsteen
Adam J. Hopkins
Aaron H. Reinke
Renée Suwanski

Newsletter Editor

Gabrielle Infusino

ECRWSS

Postal Customer, Local

Join the Village-wide Garage Sale

Bartlett is hosting another village-wide garage sale, Thursday, 9/8 through Saturday, 9/10, from 9 a.m. to 5 p.m. each day. An interactive map for the event, including addresses of all participating households, will be available on the village website. The village will also publicize the garage sale in the newspaper and in the next issue of the Bartletter.

To participate and have your address listed on the map, fill out the free village-wide garage sale registration on the village website, www.bartlett.il.gov. Look for details on the homepage "In the Spotlight" section.

To be included in any PRINT PROMOTIONS, sign up no later than Friday, 7/15. You can sign up until the dates of the garage sale in September and still have your address included on the online map.



image: Freepik.com

Contact Us

BARTLETT CONNECT: Need to report a pothole or a streetlight that is out, voice another concern,



ask a quick question or offer a compliment? Use the Bartlett Connect mobile app to contact the village 24/7. Download this citizen request system app on your smartphone or other electronic

device for free by searching "Bartlett Connect" in the Apple app store or on Google Play. You can also access it using the "Stay Connected" link at the top of the homepage on the village website. Bartlett Connect ensures that your issue is directed to the right person, in the right department and it provides you with a tracking number for easy follow-up. You can also search a Q&A database, subscribe to eNews, connect directly to the village website and more.

CALL: Village Hall Main Office, 630-837-0800
Public Works, 630-837-0811
Bartlett Hills Golf Course, 630-837-2741
Police Department, 630-837-0846
Emergency and TDD Service, call 911

Bartlett Village Hall Hours

Monday - Friday, 8:30 a.m. to 4:30 p.m.
Saturday, 9 a.m. to noon