

VILLAGE OF BARTLETT

COMMITTEE AGENDA

FEBRUARY 2, 2021

PUBLIC WORKS, CHAIRMAN SUWANSKI

1. Traffic Calming Measures
2. Brush Collection Service RFP

Memo

To: Paula Schumacher, Village Administrator
From: Dan Dinges, Director of Public Works
Subject: **Traffic Calming Measure Discussion**
Date: January 25, 2021

BACKGROUND

At the December 21st Village Board meeting, staff was directed to look into different traffic calming methods that the village could utilize, and begin implementing in the near future to assist in reducing speeds and addressing the safety concerns of residents. The village has been proactive in utilizing in-house speed studies through the police department as well as outside consultants for more in-depth studies, such as the West Bartlett Road Traffic Study that was recently underway, along with looking at what has been successful or unsuccessful in surrounding municipalities.

Some traffic calming techniques have already begun to be utilized within the village, such as the lowering of the speed limits throughout downtown Bartlett as recommended in the Transit-Oriented Development (TOD) Plan.

Staff researched different traffic calming methods and techniques and sat down to come up with a variety of measures that can be implemented in the near term in conjunction with other projects.

RECOMMENDATIONS

Staff is proposing implementing traffic calming measures in three (3) separate areas. Each of these areas have been identified by residents and staff as higher priority due to safety concerns related to speed, traffic violations and collisions. These areas include the intersection of North and Western Avenues, Struckman Boulevard and Appletree Lane and Prospect Avenue near the Bartlett Trail intersection. Examples of all the suggestions below are included for reference.

Struckman Blvd/Appletree Ln Intersection Adjustments

Struckman Boulevard is a larger collector street that has been cited by the police department as an area with frequent speed violations and potential safety

concerns, especially near the area of Sunrise and Sunset Parks during the warmer months.

Staff is recommending installing intersection narrowing techniques at the intersection of Struckman and Appletree. Appletree Ln is a standard width lane, while Struckman is larger, by narrowing Struckman Blvd at the intersection and incorporating high visibility striping to make the intersection stand out, this would force drivers to slow down in this area and become more aware of their surroundings. The village is planning on conducting resurfacing through our MFT in this area this coming fiscal year, and could incorporate this measure into that work.

Prospect Avenue/Bartlett Trail Crosswalk Adjustments

Prospect Avenue is a through street that has a large right-of-way (ROW) to accommodate the driveways and vehicles parked on either side of the road. Drivers have been noted as speeding on Prospect as a "cut-through" between Stearns Road and Devon Avenue. With Centennial School near Stearns and the Bartlett Trail on the northern end, staff is recommending implementing traffic calming measures on this road as well.

Staff recommends installing a center landscape median on both sides of the crossing, electronic ped-crossing signals and improving the striping at the crosswalk for the Bartlett Trail on Prospect Avenue. This measure would provide drivers with more advanced notice to be aware of bicyclists and walkers alike near this area. It would also provide more security for those who are walking or biking, including those who are heading to the elementary school.

These measures may be included in the restoration of the village's Force Main Project, that is starting at the Devon/DuPage Lift Station and being brought to the treatment plant off of Bittersweet Drive. The village may also be able to seek out grant funding, such as Safe Routes to School, to help offset the additional costs of the installation.

North/Western Avenues Radius Tightening

Residents living in the area of North Avenue and Western Avenue have brought to the attention of staff and the Village Board that vehicles traveling do not always stop at this intersection, and has caused them a great deal of concern for their safety. The police department has increased enforcement efforts in this area, and a flashing stop sign was installed at the intersection to bring more attention to vehicles that they do in fact need to stop.

Staff has continued to monitor the area and noticed that the intersection radii are very wide, and may be promoting drivers to roll through the stop and continue their turn from Western onto North, instead of making a complete stop.

Staff is recommending installing a bump-out of curb and tightening the radius of the intersection in order to force drivers to make a full stop prior to going in whichever direction they were headed. Staff also recommends utilizing the high-visibility crosswalk striping to grab drivers' attention even more. Staff suggests utilizing temporary curb and barricades to test out the calming measure before a permanent structure is installed so the effectiveness can be gauged and evaluated.

Tji/attachments

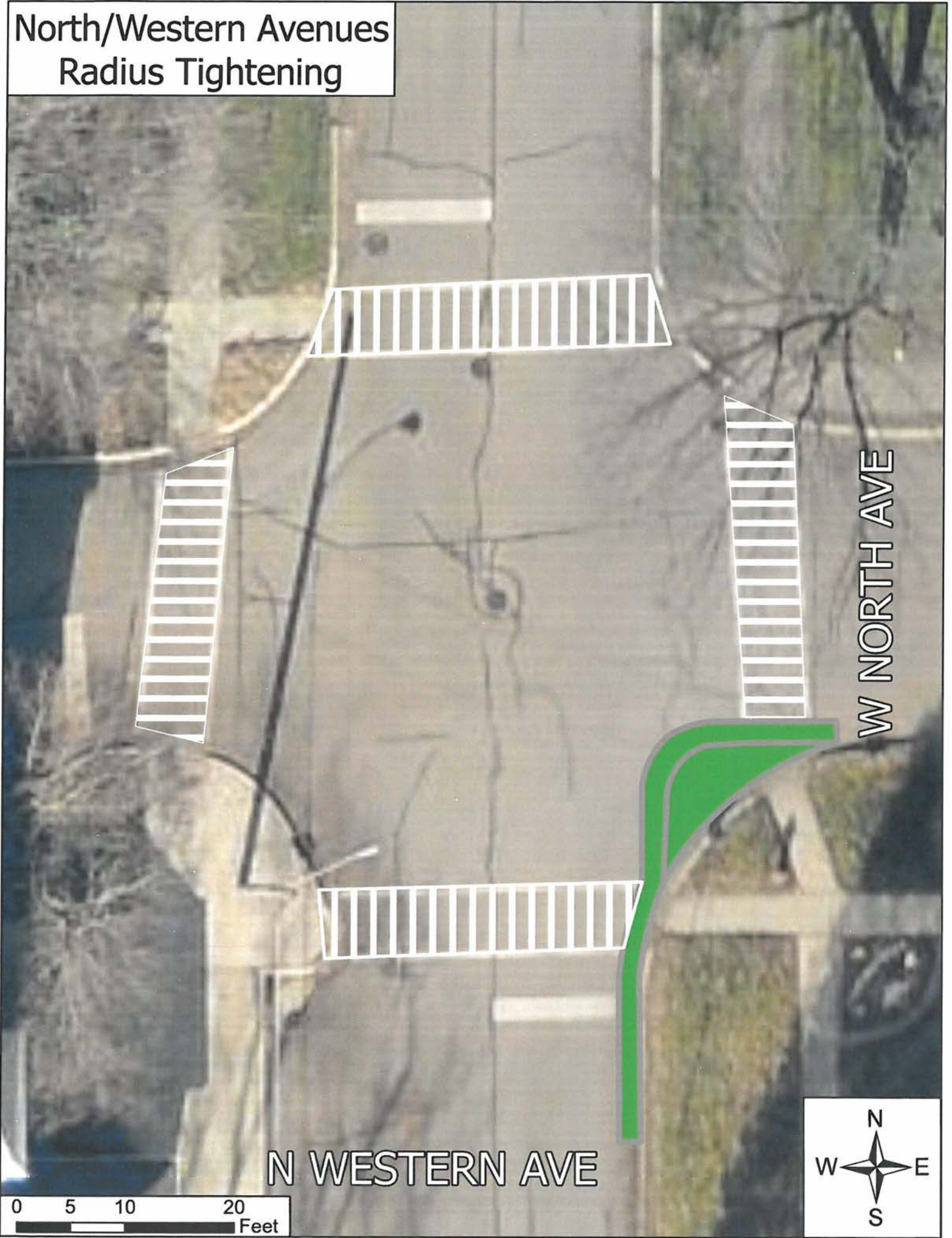
**Struckman Blvd/Appletree Ln
Intersection Adjustments**

APPLETREE LN

STRUCKMAN BLVD



North/Western Avenues
Radius Tightening



W NORTH AVE

N WESTERN AVE



Prospect Ave/Bartlett Trail Crosswalk Adjustments

PROSPECT AVE

Flashing
Crossing
Signal



BARTLETT TRAIL



Flashing
Crossing
Signal



Memo

To: Paula Schumacher, Village Administrator
From: Dan Dinges, Director of Public Works
Subject: **Brush Collection Service RFP Discussion**
Date: January 11, 2021

BACKGROUND

For many years, the Village did its own brush collection program in-house with Public Works Staff, but after approval of the new waste hauler contract, the current brush collection service for the Village is handled by the Village's waste hauler, Groot, and is included in the monthly cost for garbage removal, allowing Village employees to focus more on infrastructure improvements, such as storm sewer, tree trimming and concrete repairs, and avoiding employee injuries due to chipping brush.

Groot's handling of the brush collection runs from April thru November and requires residents to bundle the brush, in no larger than four-foot in length by two-foot in width by two-foot-high (4'x2'x2') bundles, and no more than fifty (50) pounds. This service is weekly from May – November. The board had previously discussed other brush collection options at the June 4, 2019 and the October 15, 2019 Board Meetings, with Staff obtaining preliminary proposals from experienced contractors that have performed brush collection programs in other municipalities. At those meetings, the Board elected to stick with the current program with Groot, and have Staff provide information on contractor's willing to pick up brush if it was too cumbersome for residents to bundle or handle their brush on the Village's website.

DISCUSSION

The Board instructed Staff to seek out proposals for brush collection services. The Village sent out five (5) proposals to contractors along with posting a Notice in the Examiner and to the Village website on December 9, 2020. The Village held a public bid opening on Thursday, January 7th at 10 AM. The Village received two (2) total bids, with the bids ranging from \$240,615.62 to \$242,105.50 with Trees "R" Us, Inc. being the lowest responsive and responsible bidder. The annual cost per home is approximately \$22.61, or \$3.23 per month. The Village has worked with the contractor before on various projects, and have been pleased with the results, including the removal of the Ash Trees due to the Emerald Ash Borer. The Village will

fund this service through increases with the levy. A bid tab is attached for your review.

Trees "R" Us will utilize grappler trucks on collection weeks. Trees "R" Us will be required to only work Monday thru Friday and only during times as allowed per Village Ordinance. Trees "R" Us must complete the designated section of the Village each collection week. This collection will be once a month and run from May thru November. The bid also included a maximum of a five-year contract renewable each year upon agreement between Trees "R" Us and the Village.

This service would be similar to the previous iteration of brush collection done by the Village. Residents would place the brush on the parkway, cut ends facing out on their designated week each month. The Village shall be "split" to allow the contractor time to get to each potential pickup in the allotted time. If a resident resides north of the dividing line, the residents monthly brush pickup would occur on the second full week each month. The southern dividing line would occur on the third full week.

Similar to Groot's program, any pile not picked up by the contractor must be notated and tagged to let the Village and the resident know why a pile was left behind, so the resident may rectify the issue so it can get picked up the next time.

RECOMMENDATION

Staff recommends forwarding on to the Village Board for approval, and awarding Trees "R" Us the contract for Brush Collection Services.

Tji/attachments



VILLAGE OF BARTLETT

Bartlett Brush Collection Services
BID TABULATION
 January 7, 2021

Item No.	Items	Trees "R" Us, Inc. P.O. Box 6014 Wauconda, IL 60084	Kramer Tree Specialists, Inc. 300 Charles Court West Chicago, IL 60185
	Total	Total	Total
1	Brush Collection Annual Service	\$240,615.62	\$242,105.50
2	5-Year Contract Service	\$1,203,078.10	\$1,210,527.50